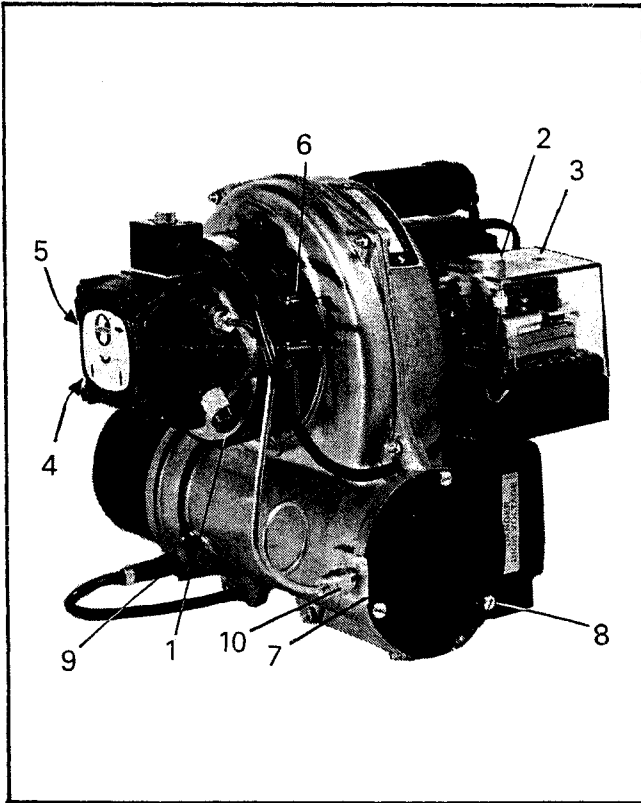


COMMISSIONING INSTRUCTIONS

Selectos Model D.11 Oil Burners



1. Pressure gauge plug.
2. Lock-out light
3. Reset button.
4. Bleed screw.
5. Oil pressure adjusting screw.
6. Air band adjusting screw.
7. Rotatable block.
8. Inspection disc screws.
9. Photo resistor.
10. Union nut.

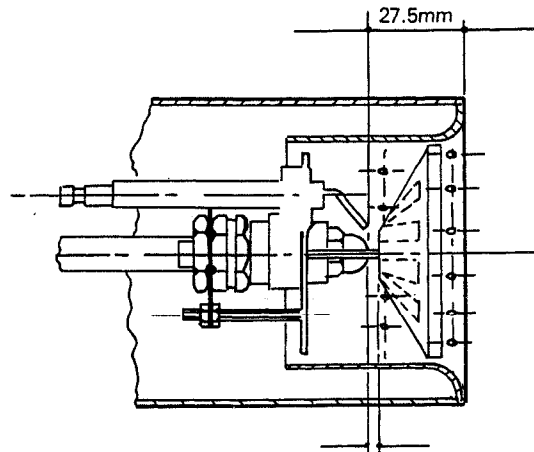
Bump 26378

Boiler Model	TRO 12/14	TRO 15/19	TRO 20/25	TRO 28/32
Rated kW	14	19	25	32
Output BTU/Hr	48,000	65,000	85,000	110,000
Selectos Burner Model	D.11	D.11	D.11	D.11
Burner Head	A.20	A.36/4	A.36/4	F.55
Danfoss Nozzle	0.50 80°H	0.60 80°H	0.75 80°H	1.1 60°S
Pump Pressure p.s.i.	100	120	140	110
Kerosene Firing Rate ml/min.	28.5	40.0	52.0	67.0

SELECTOS BURNER HEAD SETTINGS

USED ON TRO12/14 BOILER

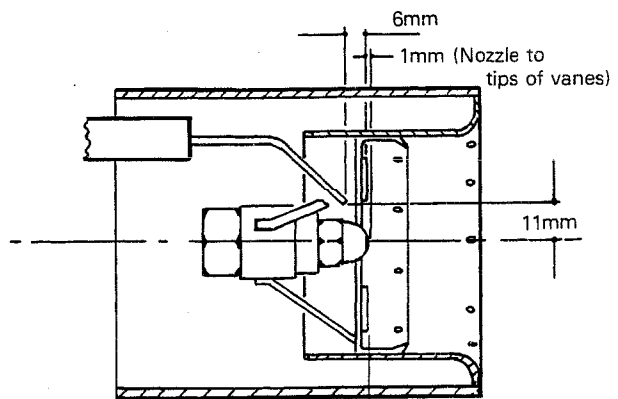
D11/A20 HEAD SETTINGS



Electrodes to be set 3mm apart, flush with front of nozzle, 10mm above nozzle centre
3mm (nozzle to Flame ring)

USED ON TRO 15/19 Mk. II & 20/25 Mk. II BOILER

D11/A66/4 HEAD SETTINGS

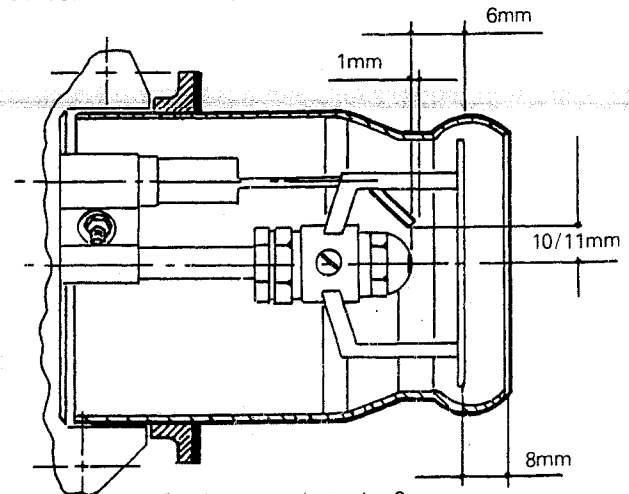


30mm TRO 15/19
35mm TRO 20/25

Gap between electrodes-3mm

USED ON TRO 28/32 Mk. II BOILER

D11 F55 HEAD SETTINGS

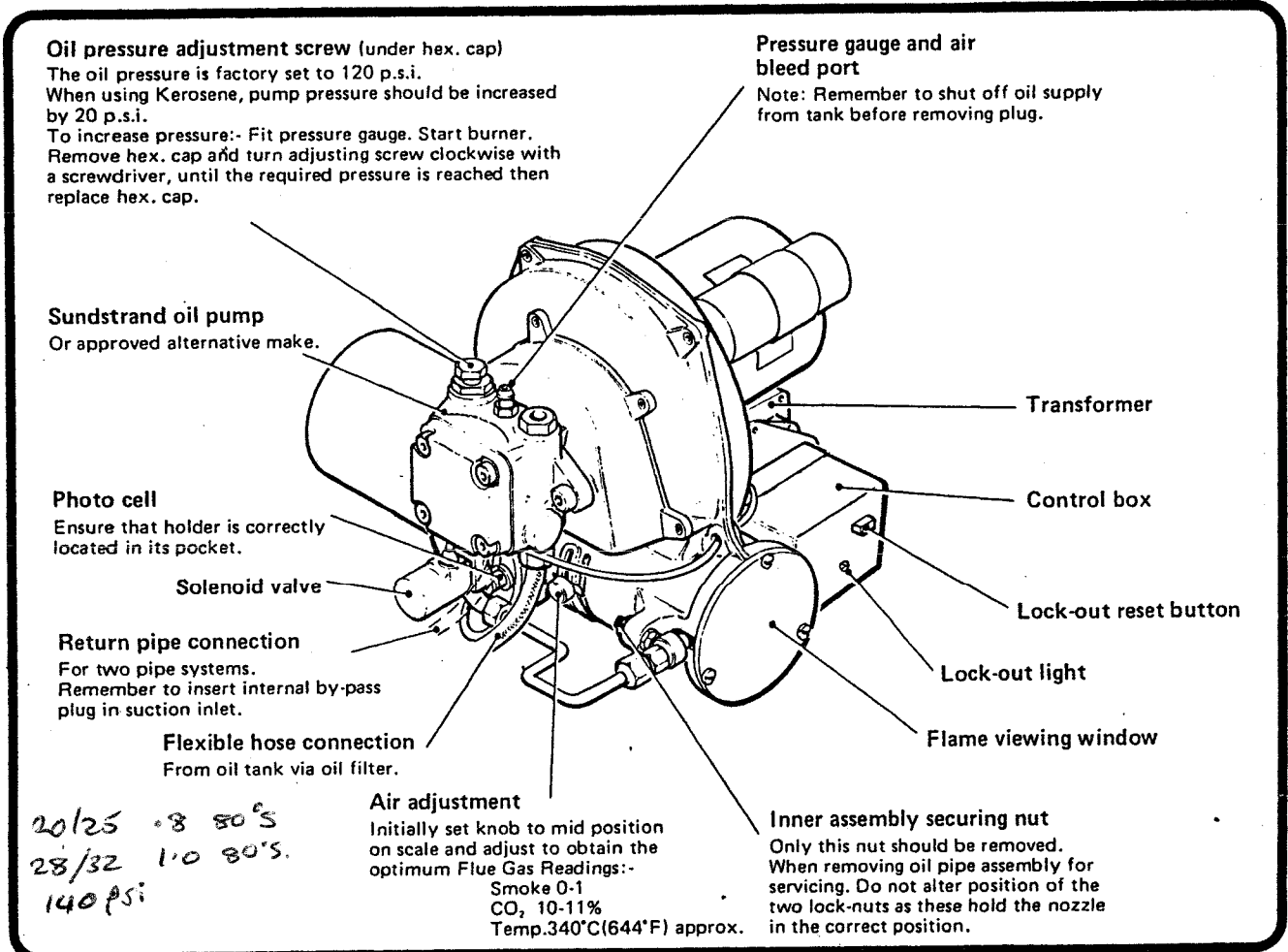


Gap between electrodes-3mm

Commissioning Instructions

for Selectos D42/T40 oil burner
as used on TriancoStewart TSO Boilers
models 20/25 & 28/32

To be retained
by householder



It is recommended that these instructions are read completely before commissioning.

Commissioning procedure

- Slacken off the two fixing screws on burner fixing flange and remove Burner from Boiler.
- Check electrodes and nozzle settings by reference to drawing overleaf, ensuring that the nozzle is centrally positioned in the blast tube. Check that the choke is stamped T.40.
- Check that the photo cell is correctly located in its socket.
- Replace Burner in Boiler ensuring that the blast tube is pushed fully through fixing flange.
- Set air shutter half open.
- Ensure that the boiler is full of water and that all valves are fully open.
- Check that all oil and electrical connections are made.
- Open oil valve(s) from storage tank.
- Vent air from oil pump through Bleed points provided.
- Check that any room thermostat, time clock, etc. is in the 'ON' position, including the Boiler thermostat.

ALL PARTS FROM BRAYS 0113 243 5399