

TRIANCO



**EUROTRADER PREMIER 50/90 CONDENSING BOILER
EUROTRADER PREMIER 100/125 CONDENSING BOILER**

**OIL FIRED CENTRAL HEATING BOILERS
FOR BALANCED OR CONVENTIONAL FLUE**



TRIANCO

CE BED 92/42 EEC
EMC 89/336 EEC

**USER, INSTALLATION
COMMISSIONING & SERVICING
INSTRUCTIONS**

To be retained by householder

HEALTH AND SAFETY

INFORMATION FOR THE INSTALLER AND SERVICE ENGINEERS

Under the Consumer Protection Act 1987 and the Health and Safety at Work Act 1974, it is a requirement to provide information on substances hazardous to health (COSHH Regulations 1988).

The Company takes every reasonable care to ensure that these products are designed and constructed to meet these general safety requirements, when properly used and installed.

To fulfil this requirement products are comprehensively tested and examined before despatch.

This appliance may contain some of the items below.

When working on the appliance it is the Users/Engineers responsibility to ensure that any necessary personal protective clothing or equipment is worn appropriate to parts that could be considered as being hazardous to health and safety.

INSULATION AND SEALS

Glass Rope, Mineral Wool, Insulation Pads, Ceramic Fibre, Glass Insulation.

May be harmful if inhaled. May be irritating to the skin, eyes, nose or throat. When handling avoid inhalation and contact with eyes. Use (disposable) gloves, face masks and eye protection.

After handling wash hands and other exposed parts. When disposing, reduce dust with water spray, ensure parts are securely wrapped.

GLUES, SEALANTS & PAINT

Glues, Sealants and Paints are used in the product and present no known hazards when used in the manner for which they are intended.

KEROSENE & GAS OIL FUELS (MINERAL OILS)

1. The effect of mineral oils on the skin vary according to the duration of exposure.
2. The lighter fractions also remove the protective grease normally present on the surface of the skin rendering the skin dry, liable to crack and more prone to damage caused by cuts and abrasions.
3. Skin rashes (oil acne). Seek immediate medical attention for any rash, wart or sore developing on any part of the body, particularly the scrotum.
4. Avoid as far as possible any skin contact with mineral oil or with clothing contaminated with mineral oil.
5. Never breathe any mineral oil vapours. Do not fire the Burner in the open i.e. out of the Boiler as a misfire will cause unburnt oil vapours.
6. Barrier cream containing lanolin such as Rosalex Antisolv, is highly recommended together with a strict routine of personal cleaning.
7. Under no circumstances should mineral oils be taken internally.

CONTENTS

	PAGE
1. USER INSTRUCTIONS	
Introduction	4
How to use your Trianco Boiler	4/5
After-sales service information	6
2. INTRODUCTION TO INSTALLATION	7
3. TECHNICAL INFORMATION	8
Technical specifications	8/9
4. INSTALLATION	10
Regulations / Health and Safety	10
Siting	10
System design	10
Ventilation	10/11
Heating & hot water systems	11
Electrical supply	12
Wiring diagram	12
Condensate drain connections	13
5. OIL SUPPLY	14
Oil	14
Storage tank	14
Single pipe oil supply	15/16
Two pipe oil supply	15/16
Oil de-aerators	15
6. FLUE SYSTEM	17
Conventional chimneys	17
Balanced flue systems	18
Balanced flue assembly	19/20/21
7. COMMISSIONING	22
8. SERVICING	22/23
9. FAULT FINDING	24/25
10. SPARES	26
Spares list	26
Boiler assembly drawing	27

1. USER INSTRUCTIONS

Please note, to assist Trianco in improving customer service, it is important that the guarantee/registration card is returned.

INTRODUCTION

The Trianco Eurotrader Premier condensing boiler has been designed and constructed to give years of trouble free service and these instructions are provided to assist you in obtaining the best performance with the least trouble and cost.

The boiler will provide both domestic hot water and central heating with the simplest of controls. It is supplied with an adjustable boiler control thermostat, and a manual-reset high limit thermostat, requiring little attention, other than the setting of any system controls (such as a room thermostat or programmer).

TO FIRE THE BOILER

Before firing the boiler, ensure that the system is full of water, that there is a sufficient level of oil in the storage tank, and that all isolation valves are fully open.

Check that the time-switch/programmer (if fitted) is **on** and the room thermostat is calling for heat.

Set the boiler thermostat (fig. 1) to the desired temperature.

Switch on the electrical supply to the boiler. The burner should fire after a few seconds.

Set the time-switch/programmer (if fitted) to the times and programme required.

The boiler should now operate automatically, cutting in and out according to the heat demand.

TO STOP THE BOILER

The boiler may be switched off by turning off the boiler control thermostat (fig. 1) fully anti-clockwise to the **off** position, 'O'.

If the boiler is to be off for a long period of time, it is recommended that the mains supply to the appliance is switched off, or the time-switch/programmer (if fitted) is set to the **OFF** position.

BOILER CONTROL THERMOSTAT

The boiler control thermostat allows you to select the temperature of the water leaving the boiler. It is calibrated between High and Low, in five intermediate settings, corresponding to a temperature range between 82°C (High) and 55°C (Low). The thermostat is switched off when the knob is turned fully anti-clockwise to position 'O'.

The installer must take into consideration that the return water temperature must not drop below 50°C when the appliance is up to full operating temperature.

Note: Where a cylinder thermostat or room thermostat is fitted, ensure that the boiler thermostat is set above or equal to the highest setting.

HIGH-LIMIT THERMOSTAT

The high-limit thermostat is factory-set and requires no adjustment. Should the boiler thermostat malfunction and the water temperature rise to 110°C, the limit thermostat will take over and shut down the appliance.

The limit thermostat is located on the rear of the control box and can be reset by pushing in the button. If the thermostat operates frequently, consult your service engineer, as there may be a fault in the system.

Note: the high-limit thermostat can only be reset when the water temperature has dropped by at least 20°C.

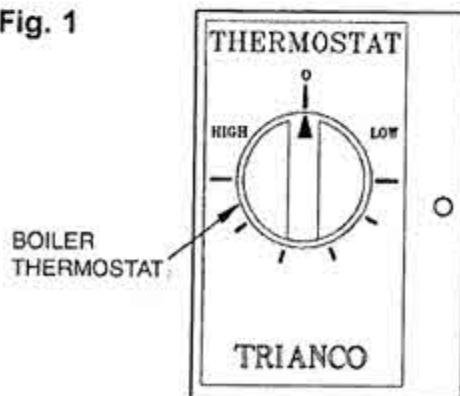
BURNER LOCK-OUT

If the burner fails to light for any reason, the boiler will go into lock-out mode, indicated by the illumination of the reset button on the burner control box (fig. 2). To reset the burner, press this button. If the burner returns to lock-out, wait for one minute before pressing the button again.

If the burner still fails to light, follow the simple fault-finding guide (page 5), before switching off the electrical supply to the boiler and contacting your service engineer if the failure persists.

Important: do not attempt to reset the burner more than twice - constant attempts to do so may cause permanent damage to components within the burner.

Fig. 1



BURNER
LOCK-OUT LIGHT
& RESET BUTTON

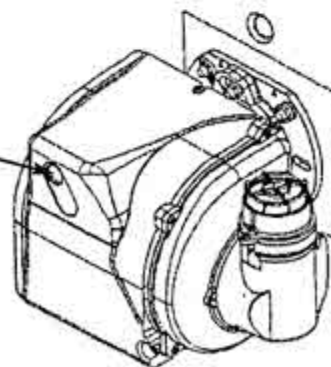


Fig. 2

SYSTEMS CONTROLS

ROOM THERMOSTAT

The room thermostat should not be positioned near a source of heat, such as a radiator, or be exposed to direct sunlight, as this will cause the central heating to switch off before the room is up to the correct required temperature. Always follow the manufacturer's instructions for the best siting position of the room thermostat.

TIME-SWITCH/PROGRAMMER

When choosing the operating times for your boiler, it is useful to remember that central heating systems usually take between half an hour and an hour before becoming effective and usually remain warm for up to half an hour after boiler shut-down. The timer can therefore be switched off earlier as an economy measure.

FROST PROTECTION

If the boiler and central heating is shut down for any period of time during very cold weather, or your boiler is located in a boilerhouse external to the property being heated, the water may be in danger of freezing and, as such, it is advisable to protect the installation with a frost thermostat.

Where the system is not protected, it is suggested that the boiler is left switched on and the room thermostat set to a low setting (e.g. 7°C) to prevent the building temperature falling too low.

If the system is shut down for a long period during very cold weather, it is also advisable to completely drain the system. However, too frequent draining of the system should be avoided, especially in hard water areas, as this could lead to scaling of the boiler waterways.

See **page 7** for flushing and water treatment.

SHUTTING DOWN FOR THE SUMMER

If the boiler is shut down for the summer months, it is advisable to have it serviced and thoroughly cleaned as soon as possible to minimise corrosion of the heating surfaces.

OIL

The oil for your boiler is 28 sec. Kerosene class C2 to BS 2869.

Always ensure the oil storage tank is topped up regularly; do not wait until the tank is nearly empty before refilling, as sludge and water could be sucked into the oil pipe, affecting the operation of the burner and potentially reducing the life of the pump.

After a delivery of oil, it is recommended that the oil is allowed to settle in the tank for about half an hour before restarting the boiler.

Sludge and water caused by condensation should be drawn off at the drain-cock on the oil tank annually.

SIMPLE FAULT FINDING

If the boiler fails to start for no apparent reason, carry out the following checks before calling your service engineer.

1. Check for failure in the electrical supply
2. Check for a blown fuse. If the fuse has blown and the replacement subsequently blows again, switch off the mains electrical supply to the boiler and contact your service engineer.
3. Check that there is adequate oil in the tank and that all isolation valves are fully open.
4. Check for burner lock-out (see **page 4**).
5. Check for excess water temperature (see high-limit thermostat details, **page 4**, for further details).

Note: If the boiler has been shut down due to a failure of the power supply, it may be necessary to reset the time-switch or programmer to the correct time, unless the device has an in-built power reserve.

SERVICING

To ensure the efficient and reliable operation of the boiler it is essential that the burner be **commissioned** immediately after installation, and prior to first use. The boiler requires an annual service thereafter.

IMPORTANT NOTES

1. Only a OFTEC-trained and registered engineer can carry out commissioning and service work.
2. Electrical safety checks should be carried out by a qualified electrical engineer.
3. It is the responsibility of the installer to ensure proper commissioning is carried out.
4. It is a requirement of the guarantee and any extended warranty that an annual service is carried out.
5. The system water must always be protected by a corrosion inhibitor.

TRIANCO CUSTOMER AFTER SALES SERVICE INFORMATION

A step by step guide to reporting a fault with your appliance

A qualified field SERVICE ENGINEER is available to attend a breakdown or manufacturing fault occurring whilst the appliance is under guarantee.

The appliance must be made available for service during normal working hours, Monday to Friday (no weekend work is accepted).

A charge will be made where:

- Our Field Service Engineer finds no fault with the appliance
or
- The cause of a breakdown is due to other parts of the plumbing/heating system (including oil line/lack of oil), or with equipment not supplied by Trianco.
or
- Where the appliance falls outside the guarantee period (see terms and conditions enclosed).
or
- The appliance has not been correctly installed, commissioned or serviced as recommended (see commissioning, installation and servicing instructions)
or
- The breakdown occurs immediately following an annual service visit. In this instance your appointed Service Agent must check all his work PRIOR to requesting Trianco to attend.

PLEASE NOTE:

Unauthorised invoices for attendance and repair work carried out on this appliance by any third party will not be accepted by Trianco.

NOTE: Burner nozzles are currently guaranteed until the first service.

Over 50% of all service calls made are found to have no appliance fault.

What to do in the event of an appliance fault or breakdown:

Step 1: Always contact your installer or commissioning engineer in the first instance, who must thoroughly check all his work PRIOR to requesting a service visit from Trianco.

Step 2: If your appliance has developed an in-guarantee fault your installer should contact Trianco Service Centre for assistance.

What happens if my installer/engineer is unavailable?

Step 3: Contact Trianco Direct. We will provide you with the name and telephone number of our Service Agent. However, a charge will apply if the fault is not covered by the appliance guarantee (payment will be requested on site by our independent Service Agent).

Note: Before contacting Trianco, please have the following information ready:

- 1) Boiler serial number or your customer ID number (issued upon registration of the boiler with Trianco).
- 2) Date of appliance installation.

Boiler Serial Number:	_____
Cust ID Number:	_____
Installation Date:	_____

SERVICE CENTRE AND TECHNICAL SUPPORT

Tel: 0114 257 2300 Fax: 0114 257 2338

Hours of business Monday to Thursday 8.30am - 5.00pm

Friday 8.30am - 2.30pm

INSTALLATION INSTRUCTIONS

2. INTRODUCTION

The Trianco Eurotrader Premier condensing boiler has been designed to conform to European Directive/Standards BED 92/42 EEC LVD 73/23/EEC EMC 89/336/EEC.

The boiler design incorporates a secondary stainless steel heat exchanger, which recovers heat from the flue gases which would normally be lost when using conventional oil fired boilers.

The matched pressure-jet burner is exceptionally quiet in operation and ensures clean and efficient combustion, with low NO_x emissions.

As the Eurotrader balanced-flue boiler is a true room-sealed appliance, it is suitable for installation in a garage.

The boiler is suitable for all normal open-vented central heating and indirect hot water systems. The boiler can also be used with sealed systems up to a working pressure of 3 bar, with the appropriate sealed system safety equipment.

Two flow and return sockets are provided to facilitate connection to the heating and hot water systems.

To ensure the boiler is operating at its maximum efficiency, the central heating return temperature should be 40°C or above. Maximum performance will be achieved by maintaining a differential of 10°-30°C between the flow and return water temperatures.

Due to the high efficiency of this range of boilers, and to comply with Building Regulations, Part L, it is essential that the appliance be fitted on fully-pumped systems only.

All servicing can be carried out from the front of the boiler, allowing the appliance to be fitted under a worktop, if required. The front-mounted flue-cover permits easy access for removal of the flue-baffles and cleaning of heating surfaces.

The boiler is fully automatic in operation and incorporates all necessary safety controls to ensure safe and reliable running.

The Trianco Eurotrader Premier is supplied with the burner set for 28 sec. Kerosene Class C2 to BS 2869 fuel to meet the Building Regulation requirements for low level flue discharge. It is also recommended this fuel is used when the boiler is connected to a conventional chimney because of the clean-burning characteristics of kerosene.

BALANCED FLUE KITS

The boiler is supplied suitably equipped for connection to a conventional chimney, but can easily be converted into a room-sealed balanced flue appliance by the application of a Trianco balanced flue kit. These kits allow the boiler to be installed in a wide variety of site conditions. (see balanced flue kit details **page 18**, for further details).

Note: Only the circular low-level horizontal balanced flue kits can be used on the Trianco Eurotrader Premier condensing boiler.

FLUSHING AND WATER TREATMENT

The performance of the appliance could be impaired by system debris or the effects of corrosion. New systems must be thoroughly flushed to remove metal filings, solder, machining oils and any other fluxes or greases before connecting the boiler.

When fitting the appliance to an existing system, it is advisable to clean the system by using an appropriate flushing and descaling agent. Refer to BS 7593 (1992) for guidance.

System additives - corrosion inhibitors and all flushing agents/descalers should be suitable for steel boilers and comply with BS 7593 requirements.

Always refer to the manufacturers' instructions.

Failure to flush and add inhibitors to the system will invalidate the appliance warranty.

The appliance is designed to be fitted to fully-pumped systems only. Failure to do so will invalidate the warranty.

The boiler must not be run without water in the system.

Important Notice:

To comply with regulations in force, your new boiler must be installed and commissioned by an OFTEC-registered engineer. The installation must also comply with current *Building Regulations, Part L*.

Failure to meet the terms of these requirements may invalidate your guarantee.

THE PERSON(S) WHO INSTALLS THIS APPLIANCE, COMMISSIONS, SERVICES OR CARRIES OUT ANY REMEDIAL WORK, IE ELECTRICAL FAULT FINDING, MUST HAVE SUITABLE ENGINEERING QUALIFICATIONS

3. TECHNICAL INFORMATION

MODEL	A	B
50/90	455	670
100/125	455	715

ALL DIMENSIONS IN MM.
ALL UNUSED TAPPINGS ARE
TO BE PLUGGED OFF.

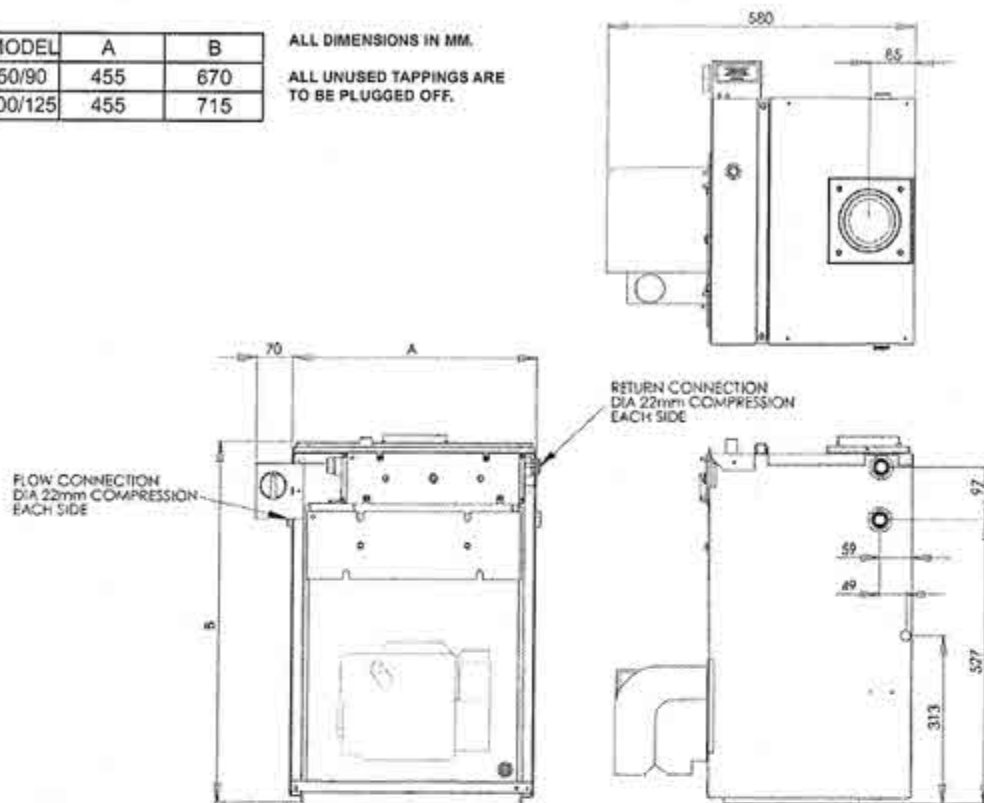
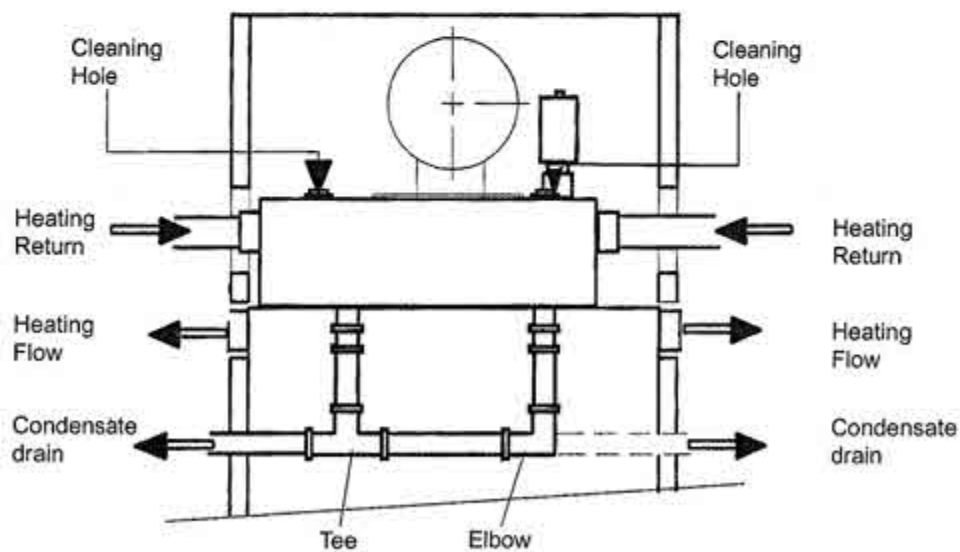


Fig. 3 OUTLINE DIMENSIONS



View of rear of boiler showing boiler connections. Connections can be made on L/H side or R/H side of boiler.

Fig. 4

TECHNICAL SPECIFICATION

Boiler Models		50/90	100/125
Weight (empty)	Kg	140	170
Water Content	litres	26	32
Flow & Return Connections	-	22mm Compression	
Flue Socket Diameter	in.	4	
Max. Operating Pressure	bar psi	3 43.5	
Test Pressure	bar psi	4.5 65.3	
Water Side Resistance 10 diff 20 diff	mbar mbar	25 8.3	25.4 8.2
Starting Current	amp	3.5	
Running Current	amp	0.77	
Control Thermostat	- adjustable up to 82° C		
Limit Thermostat	- factory set at 110° C (hand reset)		
Casing Finish	- blue		
Thermal Insulation	- boiler shell insulated with glass fibre		
Optional Extras	- Trianco balanced flue kits		
Electricity Supply	- 230/240V - 50Hz fused at 5 amp.		

Boiler	Model Output (non-condensing)	Output (Condensing)	Input	Nozzle	Pump Pressure (psi)	Co ₂ (%)
Eurostar Premier 50/90	50,000 btu's 14.65 kW	53,400 btu's 15.65 kW	52,700 btu's 15.42 kW	0.45 x 80°EH	120	12.0
	60,000 btu's 17.58 kW	64,000 btu's 18.74 kW	63,000 btu's 18.46 kW	0.5 x 80°EH	140	12.5
	70,000 btu's 20.51 kW	74,400 btu's 21.8 kW	73,300 btu's 21.48 kW	0.6 x 80°EH	125	12.5-13.0
	80,000 btu's 23.44 kW	84,800 btu's 24.85 kW	83,600 btu's 24.49 kW	0.65 x 80°EH	130	13.0
	90,000 btu's 26.37 kW	95,200 btu's 27.89 kW	93,800 btu's 27.49 kW	0.75 x 80°EH	125	13.0-13.5
Eurostar Premier 100/125	100,000 btu's 29.3 kW	104,700 btu's 30.69 kW	104,700 btu's 30.69 kW	1.0 x 80°EH	100	12.0
	110,000 btu's 32.2 kW	115,000 btu's 33.76 kW	115,200 btu's 33.76 kW	1.1 x 80°EH	105	11.5
	120,000 btu's 35.2 kW	125,000 btu's 36.84 kW	125,700 btu's 36.84 kW	1.1 x 80°EH	110	12.5
	125,000 btu's 36.6 kW	130,900 btu's 38.36 kW	130,900 btu's 38.36 kW	1.1 x 80°EH	115	12.5

4. INSTALLATION

REGULATIONS

Installation of the boiler must comply with the following British Standards and Regulations:

BS 5410: Part 1 - Code of Practice for Oil Firing.

BS 5449 - Forced Circulation Hot Water Central Heating Systems.

The Building Regulations - Part 'J' (England and Wales)
Part 'F' Section 111(Scotland)
Part 'L'

The Control of Pollution (Oil) Regulations
Current I.E.E. Regulations
Local Water Undertakings By-laws
OFTEC Installation Requirements for Oil Fired Boilers
and Oil Storage Tanks. OFST 100 and OFST 200.

HEALTH AND SAFETY AT WORK ACT

The installer should be aware of his responsibilities under the Act and provide, where necessary, appropriate protection for persons carrying out the installation.

In the interest of safety, it is required that the appliance is installed, commissioned and serviced by an OFTEC registered technician.

A useful guide to safe working practices for oil-firing technicians is available from OFTEC.

Electrical work should be carried out in accordance with BS 7671:2001 by a qualified electrical engineer.

SITING THE BOILER

Sound Levels

Whilst the low sound level of the boiler makes it suitable for utility room installation, the following factors should be taken into consideration before installation:

- (a) Some people are particularly sensitive to low noise levels - discuss with the householder.
- (b) Small rooms tend to amplify noise, particularly if the room construction is hollow or the surface tiled.
- (c) A chimney passing through a bedroom will transmit noise.
- (d) Low-level flue terminals produce some exhaust noise, so care should be taken when siting adjacent to neighbouring property, patios and play areas.
- (e) Due to the condensing nature of the boiler, a plume of water vapour will be discharged from the flue. This should be taken into account when siting the flue terminal. Refer to section on flue systems.

Clearance and Service Access

When siting the boiler, ensure adequate clearance is allowed for making water and flue connections. As the boiler can be fully serviced from the front, there is no need for a headroom allowance, nor provision for removal of a worktop. However, a clearance of at least 750mm is required at the front of the boiler for future service access.

Hearth

The boiler must be fitted on a non-combustible base, which is level and capable of supporting the installed weight of the boiler, including its full water content.

SYSTEM DESIGN

To achieve the maximum system efficiencies, the heating system should be designed to the following parameters

Boiler Flow Temperature	50°C to 80°C
Flow Differential Temperature	10°C to 30°C

COMBUSTION AND VENTILATION AIR

Conventional Flue Boilers

The provision of an adequate supply of combustion air is essential for the efficient and safe operation of the boiler. The air opening should be positioned to cause the least possible nuisance to the householder, and located in a place which will reduce the likelihood of it being accidentally blocked.

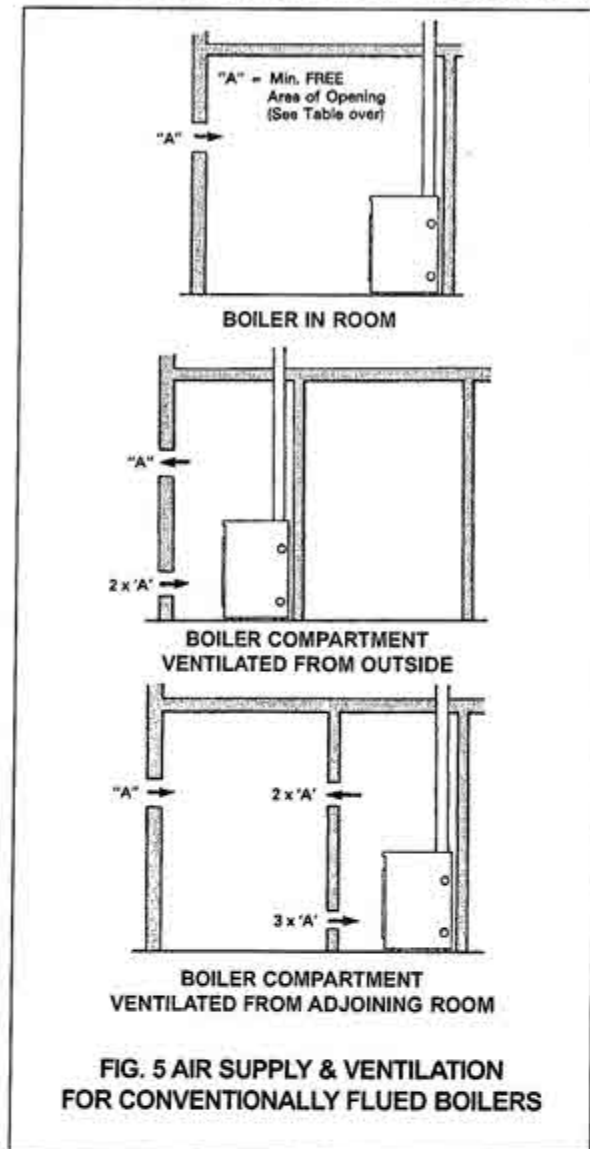
BS Code of Practice for Oil (BS 5410 Part 1) requires a permanent air inlet opening of 550mm² per kW of boiler rated input (see table below and Fig. 5 for air openings required).

Room-Sealed Balanced Flue Systems

Although no openings are required for the supply of combustion air, to prevent the overheating of the boiler controls, ventilation is necessary if the boiler is installed in a compartment or confined space (see table below and Fig. 6 for requirements).

Output	Detail 'A' (Figs 5 & 6)
50,000 btu/h	105cm ²
90,000 btu/h	145cm ²
100,000 btu/h	161cm ²
125,000 btu/h	202cm ²

COMBUSTION AND VENTILATION AIR (CONT)



Extractor Fan (Conventionally-Flued Systems only)

If the boiler room has an extractor fan, the combustion performance of the appliance must not be affected when the fan is running and all doors and windows are closed. A flue gas check on the smoke and CO₂% and smoke number should be carried out to prove that combustion is taking place satisfactorily.

HEATING AND DOMESTIC HOT WATER SYSTEMS

The heating system should be installed in accordance with current HVCA Codes of Practice and BS 5449 Part 1 - Forced Circulation Hot Water Central Heating Systems.

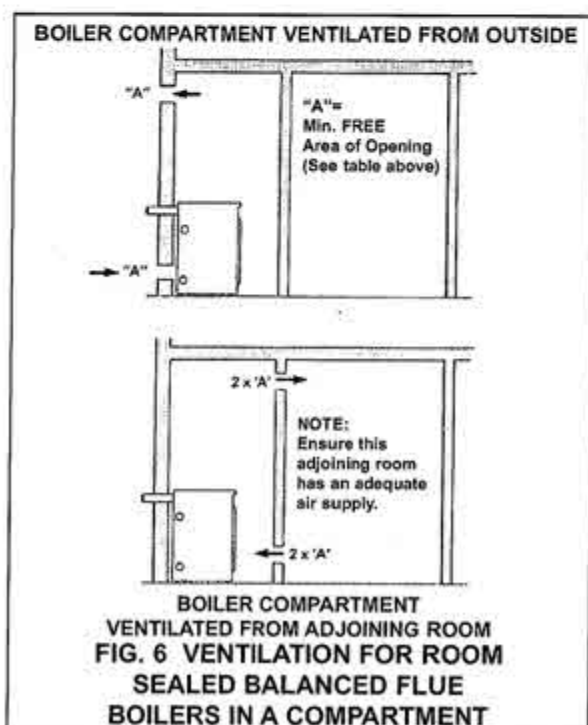
The flow and return water connections can be made to the boiler by using the tapings on the left or right hand side of the boiler.

A drain-off cock should be fitted in the lowest part of the system.

Where the boiler is also used for providing domestic hot water, a double-feed indirect cylinder to BS 1566 Part 1 must be used.

Flush out the system to remove any residue before fitting circulating pump.

Make sure all unused boiler tappings are plugged before filling the system.



ELECTRICAL SUPPLY

230V 1 Phase 50Hz (fused 5 Amp)

Note: this appliance must be earthed and the electrical supply cable must be of a greater length than the current-carrying conductor cables (i.e. live and neutral supply cables).

All electrical wiring must be carried out by a qualified electrician, in accordance with current I.E.E. Regulations and any local regulations which may apply.

The 230V - 50Hz electrical supply must be fused by a double-pole switch, with a contact separation of at least 3mm in both poles, and by a shuttered socket adjacent to the boiler (both devices must meet the requirements of BS 1363).

The minimum requirement for the power supply cable is PVC sheathed flexible cord, 0.75mm² (24x0.2mm, code designation H05 VV-F or H05 VVH2-F), as specified in table 16 of BS 6500.

All external cables entering the control box must be secured in position by the use of strain-relief bushes (supplied, see Fig. 7 for fitting instructions).

Terminal connections are also provided in the control box for the ancillary controls.

See wiring diagram Fig. 8, for further details.

High and Low Voltage Warning

In certain parts of the country, where there is a known risk of high or low voltage fluctuations, the burner should be prevented from starting by the use of a voltage-sensitive device if the voltage drops or increases sufficiently to endanger the installation.

Control Box Installation

Insert the boiler thermostat phial into the top phial pocket on the left-hand side of the boiler, making sure that the capillary is not inadvertently trapped. Insert the limit thermostat phial into the remaining phial pocket, again ensuring that the capillary is not trapped.

Secure the control box to the top left-hand side of the boiler, fixing with one screw.

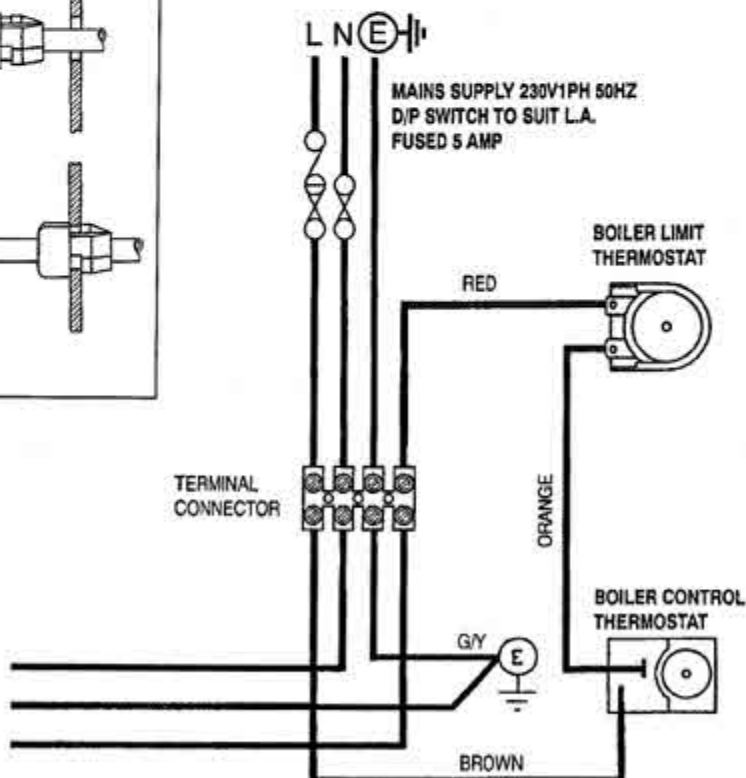
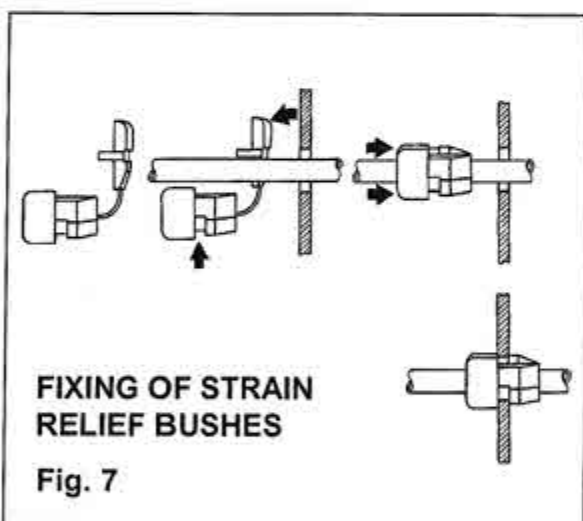


FIG. 8 - WIRING DIAGRAM

CONDENSE DRAIN CONNECTIONS

The condensate trap can be run to either the left or the right side of the boiler.

To install the condensate pipe, after deciding the position of the trap, cut 2 x pieces of plastic pipe to 175mm long and insert one into each of the straight connectors which are fitted to the drain connections on the rear underside of the condensing unit. Fit the tee fitting onto the end of the pipe nearest the side where the drain will leave the boiler. Fit the elbow onto the end of the other pipe and connect this to the tee using a piece of pipe cut to 165mm long (see Figs. 4 & 9 for details).

Use a further piece of pipe to join up the pipework via the tee. Cut a pipe to the length required and fit the elbow to the end of the pipe. Measure the distance required for the elbow to the trap, cut a pipe to length and fit. Move the boiler into position.

Where possible, connect the condensate pipework to an external waste drain.

If the boiler is to be fitted in a position where the external ground level is higher than the boiler, and there are no internal drains, a condensate pump can be fitted (refer to manufacturer's instructions).

The drain pipe must be installed to allow the condensate to drain naturally for the boiler, on a minimum fall of 1:20.

The pipework from the condensate trap to the external drain is not supplied with the boiler.

IMPORTANT NOTES:

When running any external pipework from the trap to the drain, it is essential that the pipework is kept to a minimum and is insulated to prevent the condensate from freezing.

Ensure that the trap is in an accessible position for any future servicing and maintenance to take place. Before initial firing, the condensate trap must be filled with water to prevent the escape of flue gases.

MAINTENANCE:

The trap should be inspected at regular intervals to ensure correct operation, and should be checked as part of the regular annual schedule. The 2 x screws at the rear of the top face of the boiler can be removed to give access for cleaning the drain holes in the condensing unit.

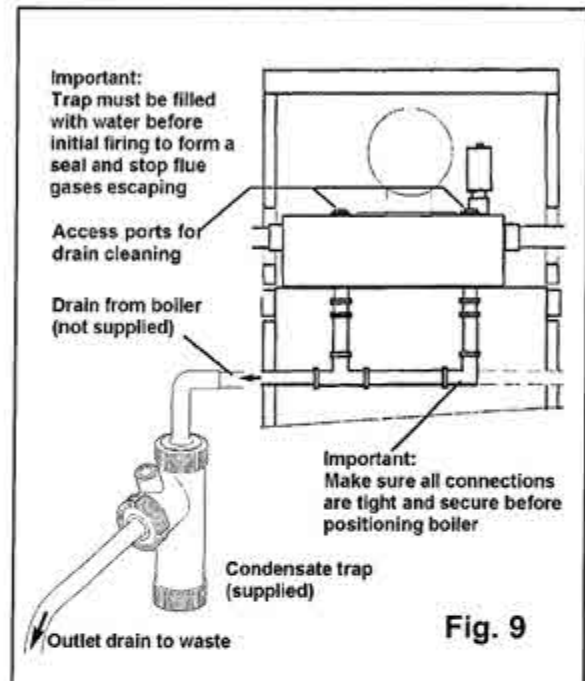


Fig. 9

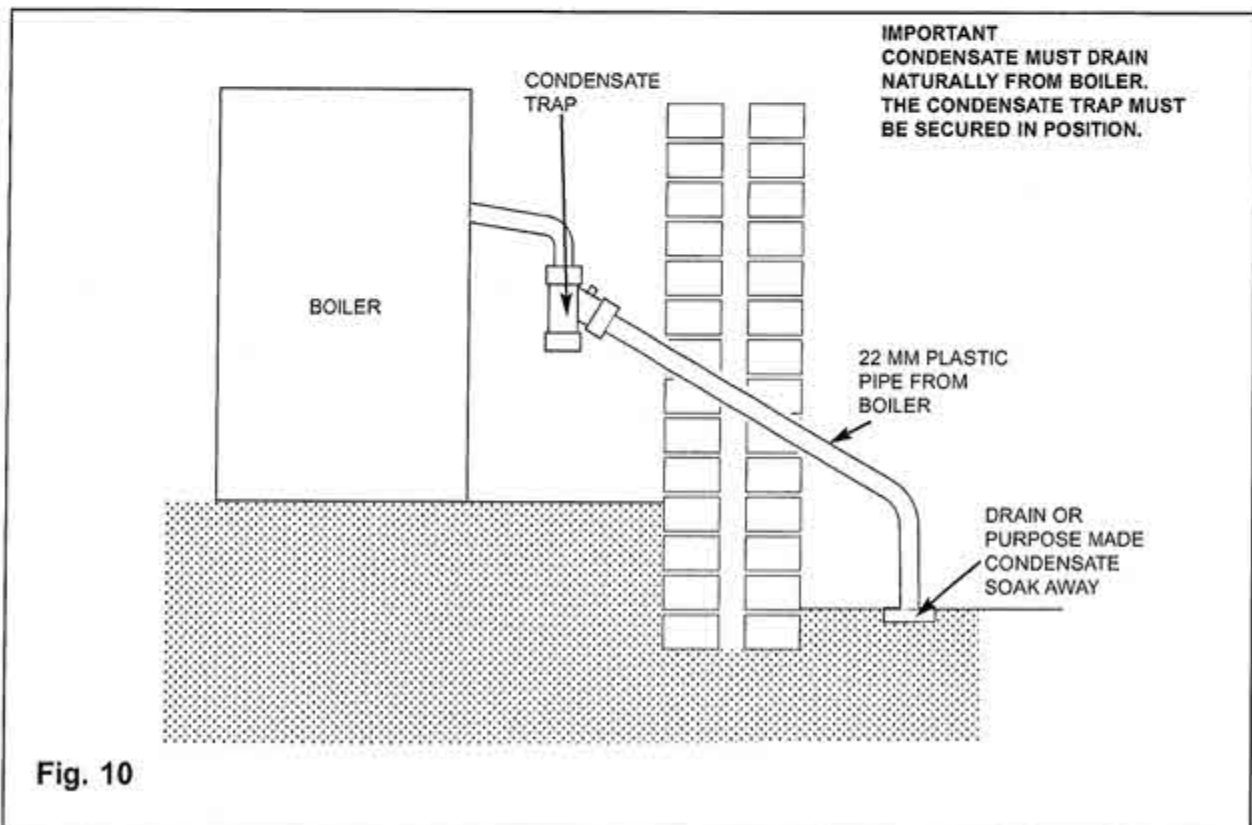


Fig. 10

5. OIL SUPPLY

OIL

The oil burner is factory-set to burn 28 sec. Kerosene C2 to BS 2869.

Trianco makes no guarantee as to the satisfactory operation of the boiler using fuels other than which is stated above.

STORAGE TANK

The tank should be fitted with weather-protected fill and vent connections, a drain-off cock, and an oil level indicator.

Size and Location of Tank

The tank should be large enough to allow for economic deliveries and be located in an unobtrusive position, having regard to the need for safety, filling, maintenance, and head of oil required. (see Fig. 11).

Steel Tanks

Steel tanks must comply with the requirements BS 799, Pt. 5: 1987 and should be mounted on brick or block piers with a waterproof membrane between the piers and tank.

Plastic Tanks

Polyethylene tanks may be used, having several advantages over traditional steel tanks:

- (a) Pier supports are not required; the tank may be fitted directly onto a flat surface.
- (b) They do not corrode; therefore never require repainting.
- (c) They are easier to handle because of their lower weight.
- (d) They are supplied with a 10 year manufacturer's guarantee.

Fire Protection

Whilst it is highly unlikely that a fire could start from a domestic oil tank, protection is required from a fire which may originate elsewhere. The tank should be at least 1.8 metres from a building, and 750mm from a site boundary. Where it is not feasible to adhere to these limits, the building wall must not have any openings other than those for ventilation, the wall must have at least a half hour resistance to fire, and must extend 1.8 metres from any part of the tank.

Alternatively, a non-combustible radiation barrier can be employed, which meets the requirements of BS 5410 Part 1. This standard applies to tanks up to a capacity of 3,500 litres.

See current OFTEC regulations for further details.

To comply with building regulation **section J5**:

- 1 Where the tank is close to a dwelling, fire protection must be provided to the eaves, if less than 1.8m from the top of the tank.
- 2 Cladding must extend at least 300mm beyond the tank.
- 3 The tank must be sited on a non-combustible base.

Pollution Protection

To comply with building regulation **section J6**, the tank must be bunded (i.e. double walled) if:

- 1 The tank is less than 10m from a stream.
- 2 The tank is less than 50m from a well, spring, or other source of drinking water.
- 3 The tank cannot be viewed from the point of delivery.
- 4 There is a risk of oil reaching a manhole cover or drain in the event of a leak.
- 5 The tank capacity exceeds 2,500 Litres.

SUPPLY

A long-life flexible oil hose is supplied with the boiler. A filter and shut-off valve are also required. These should be fitted as shown in **Figs. 11, 12 & 13**.

The oil line joints must be completely sealed and the total pipe run should be flushed thoroughly before connection is made to the burner. No soldered joints are permitted in the oil line.

Fire Valve

A remote-operated fire valve must be fitted in the oil supply line, externally to the premises, with the sensing phial located a point above the burner.

OIL SUPPLY (cont.)

Single-Pipe Oil Supply (Fig. 12)

Where the lowermost part of the tank is above the level of the burner, a single-pipe gravity system can be used. The oil supply pipe must be connected to the suction port on the burner pump via the flexible hose supplied.

Two-Pipe Oil Supply (Fig. 13)

Where the lowermost part of the tank is below the level of the burner, a two-pipe suction lift system is necessary.

When using a two-pipe system, it is important to convert the suction pump on the burner to operate as such; remove the end cover and filter, then remove the bottom screw and the 'U' washer. Replace the screw, making sure it is fully inserted. See the burner details leaflet for further information.

A spring-loaded non-return valve must be fitted in the suction line to prevent the oil running back to the tank. No valves are permitted in the return line.

An additional flexible hose is also required.

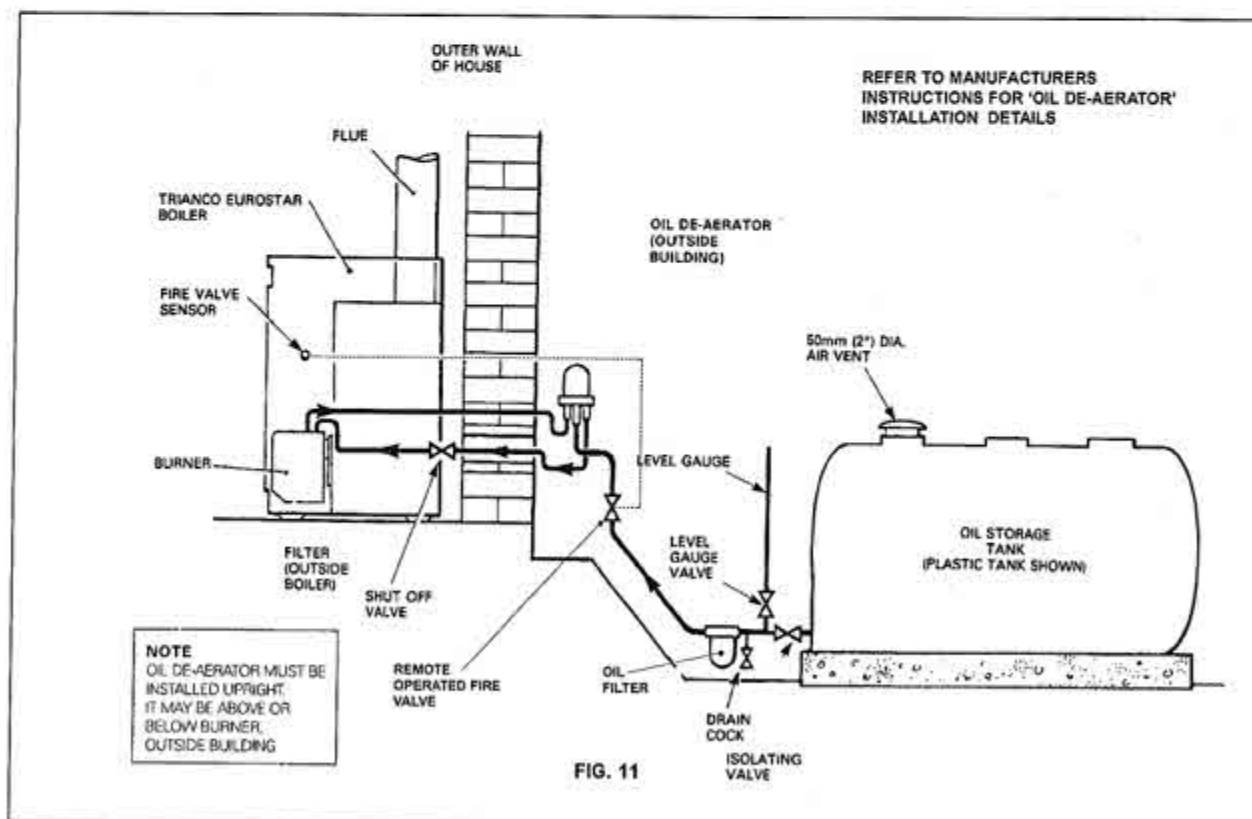
Notes:

1. The pump suction should not exceed 0.4bar, as dissolved gas may be released from the oil, affecting combustion.
2. The return pipe must end at the same level as the suction outlet to prevent loss of prime.
3. The outlet from the tank should be approximately 75mm (3 in) above the bottom to prevent sediment and water being drawn into the supply line.

Single-Pipe supply with De-aerator (Fig. 11)

Where a two-pipe suction lift is required, but the return pipe requirement is too long, or impractical to run, an oil de-aerator can be used. The burner should be piped as for a two-pipe system, up until the oil de-aerator, when a single pipe can be taken the remaining distance to the storage tank. The de-aerator should be fitted at the closest point to the boiler, externally to the premises.

A non-return valve is not required with this system, but the 'U' washer must be removed in the same manner as a standard two-pipe system.



MAXIMUM OIL SUPPLY LINE LENGTH 'L'

HEAD 'H' METRES.	.0.5	1.0	1.5	2.0	2.5	3.0	3.5	4.0
PIPE 6mm ID	10	21	31	41	52	62	73	83
PIPE 8mm ID	33	66	98	100	100	100	100	100

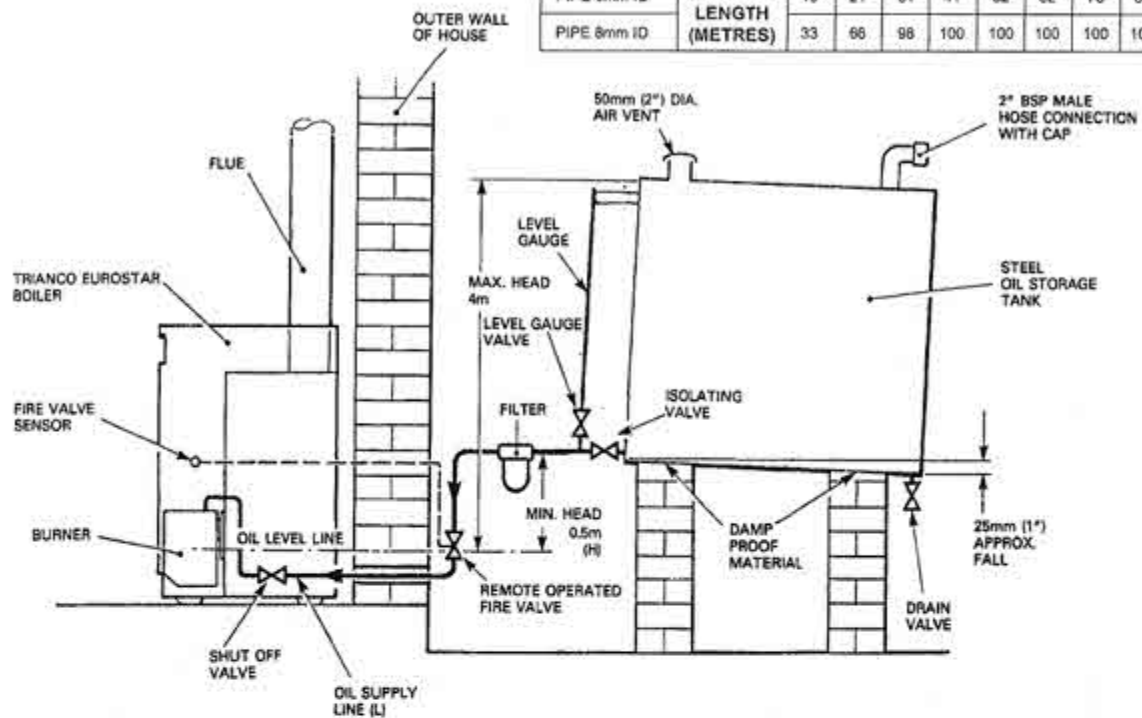


FIG. 12 SINGLE PIPE OIL SUPPLY

MAXIMUM OIL SUPPLY LINE LENGTH 'L'

LIFT 'H' METRES.	.0.5	1.0	1.5	2.0	2.5	3.0	3.5	4.0
PIPE 6mm ID	48	42	36	30	24	18	11	5
PIPE 8mm ID	100	100	100	94	75	55	36	16
PIPE 10mm ID	100	100	100	100	100	100	88	40

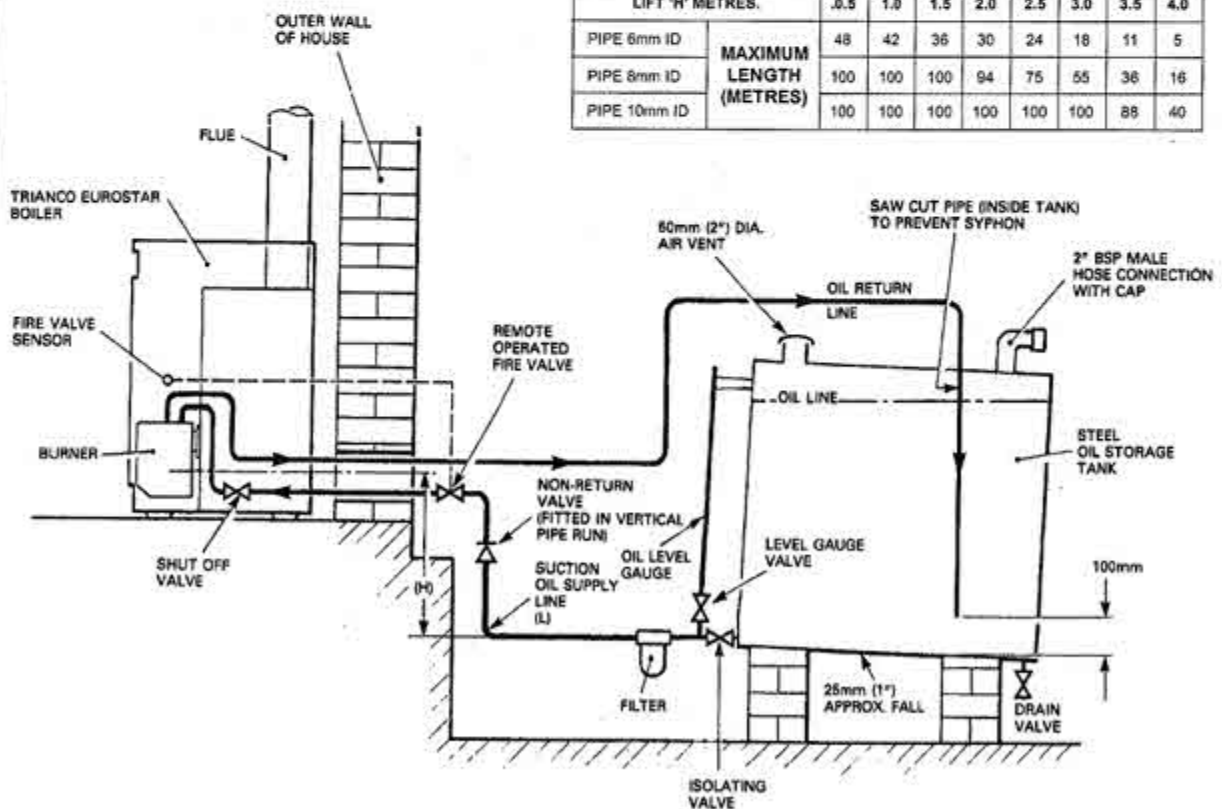


FIG. 13 TWO PIPE OIL SUPPLY

6. FLUE SYSTEMS

To evacuate the products of combustion safely and thoroughly, the boiler must have an efficient flue system. Under no circumstances should the boiler be installed using an existing flue system.

All components used in the flue system should be suitable for wet flues. The design and construction of the Trianco balanced-flue kits takes these factors into account, so the following guidance notes are for conventional chimneys only. Reference should also be made to BS 5410 Part 1 if further information is required.

CONVENTIONAL CHIMNEYS (FIG. 14)

Trianco condensing boilers operate at high efficiencies with low flue gas temperatures. The flue system used on this boiler must be suitable for low flue gas temperatures and condensation.

1. The chimney should rise as vertically as possible and terminate at a point not subject to downdraughts or adverse wind effects.
2. The condensation produced in the flue system can be allowed to run back into the boiler. No separate drain at the base of the flue system is required

3. Where an existing chimney is to be used, it must be lined with a stainless steel liner which is approved for use on an oil-fired condensing boiler. **Note:** before fitting a flue liner, the chimney must be thoroughly cleaned free of all traces of soot and scale.
4. If a rigid flue is to be fitted externally, a twin-wall flue must be used. The flue must be constructed with a stainless steel inner skin (suitable for condensation), insulation, and incorporate seals and be weather proofed.
5. The internal flue diameter must be 100 mm (4 in) minimum.
6. The flue pipe between the boiler and the chimney must be manufactured from 316 stainless steel or higher. Aluminum or plastic must not be used on any part of the flue system.
7. The in-built flue gas resistance of the Eurotrader Premier is such that it allows the boiler to operate reliably over the wide range of chimney draughts encountered by typical domestic chimneys. Under normal draught conditions, the flue should terminate with a standard cowl.

IMPORTANT

Ensure that all the joints on the flue system are adequately sealed and that no condensation can escape.

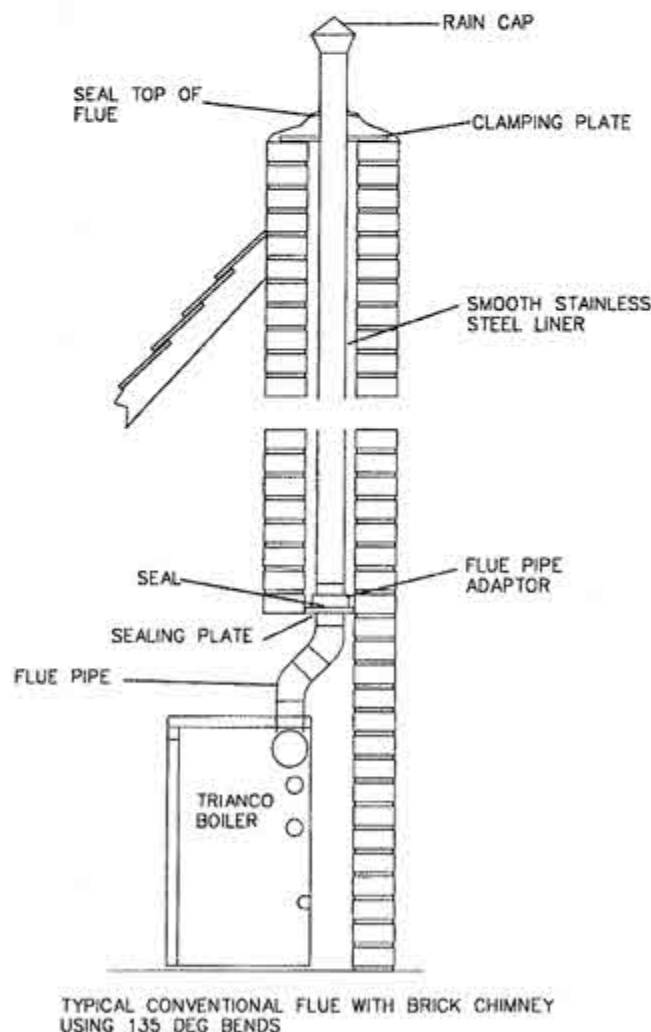


FIG.14

Balanced Flue Systems (optional extra)

The Trianco balanced flue system offers much greater flexibility for siting the boiler compared with a conventional chimney. The only requirement is for a suitable outside wall to fit the horizontal discharge terminal.

In addition to the siting benefit, the performance of balanced flue boilers is virtually unaffected by high wind conditions since the wind pressures are applied equally to both air intake and flue gas discharge, thus creating a balanced condition.

Whereas some balanced flue boilers rely on case sealing to achieve a room seal, Trianco boilers have a sealed air duct system which maintains the room sealed performance even when the casing door is removed for burner commissioning or adjustments.

The use of the balanced flue principle also enhances the overall thermal efficiency of the boiler since the incoming air extracts waste heat from the flue and returns it as pre-heated air to the burner where it aids combustion.

INSTALLATION NOTES

- Balanced-flue condensing boilers are designed to operate at low noise levels. During operation, a plume of condensation will be produced at certain times from the terminal. When positioning, these factors should be taken into consideration to ensure that they do not cause a nuisance to neighbouring properties. It should also be positioned to avoid the products of combustion from entering the building.
- Keep the terminal clear of infra-red sensing devices such as those used to control security lighting.
- Positioning of flues under balconies and carports should be avoided.
- As the system operates under positive pressure, it is essential that all flue joints are sealed correctly.
- Only 28 sec. Kerosene Class C2 to BS 2869 is permitted for use with this appliance.

Note Trianco balanced flue kits have been designed exclusively for use with Trianco boilers and as such, compatibility with other makes of boiler cannot be guaranteed.

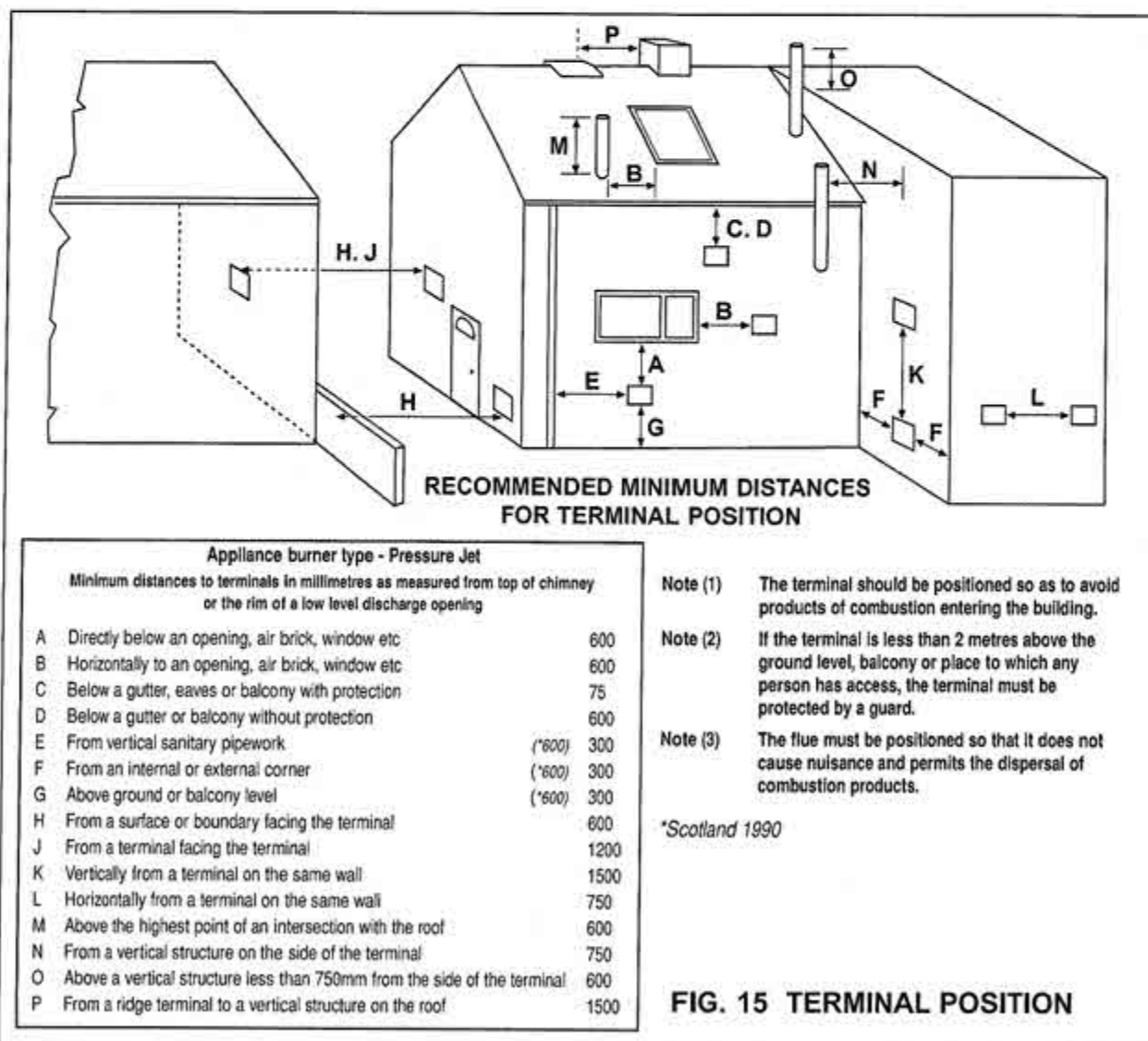


FIG. 15 TERMINAL POSITION

HORIZONTAL BALANCED FLUE KIT FITTING INSTRUCTIONS

Trianco balanced-flue kits are designed to incorporate the latest 'O'-ring seals. Before commencing assembly, please make sure that all 'O'-rings seals are in position.

ASSEMBLY METHOD (Figs. 17 to 19)

1. Having decided the position of the boiler, accurately mark out the position of the terminal and cut a circular hole 130mm in diameter through the wall.
2. Remove the four nuts on top of the boiler and remove the flue socket, leaving the gasket (item 8, Fig. 17) in position.
3. Fit the sealing plate (7) over the four studs, and place the terminal gasket (6) over the sealing plate.
4. Position the boiler.
5. Assemble the flue by sliding the terminal section (1) into the elbow section (2), making sure all 'O'-ring seals (9) are in position.
6. Slide the completed assembly through the wall from the inside.
7. Slide the flue mounting plate on the elbow section over the four studs on top of the boiler and secure in position using the nuts previously removed.
8. Adjust the terminal length as required, making sure a minimum distance of 140mm is kept from the end of the terminal from the external face of the wall.
9. Connect the hose from the burner to the socket on the end of the terminal using the jubilee clip provided (10).
10. Fill the cavity between the flue and the wall with an appropriate material (i.e. fire cement).

Important Notes:

- (a) To aid assembly, it may be necessary to apply a thin bead of lubricant (e.g. washing-up liquid) to all flue joints which incorporate 'O'-ring seals.
- (b) As the flue system operates under positive pressure, all flue joints must be well sealed. All joints which do not incorporate 'O' ring seals should be sealed with silicone sealant.
- (c) As the boiler produces condensate during normal running, it is important that all seals are made and the correct gaskets used.
- (d) To ensure that any condensate produced in the flue drains away correctly, incline the flue slightly upwards from the boiler.

TERMINAL GUARDS

When the terminal is positioned in a place where there is the possibility of contact being made by persons, or of damage to the terminal, an approved terminal guard is necessary.

Generally, exhaust 2 metres above ground level alleviates the requirement for a terminal guard.

Important: A suitable stainless steel or approved plastic-coated terminal guard should always be used. A suitable terminal guard is available from Trianco.

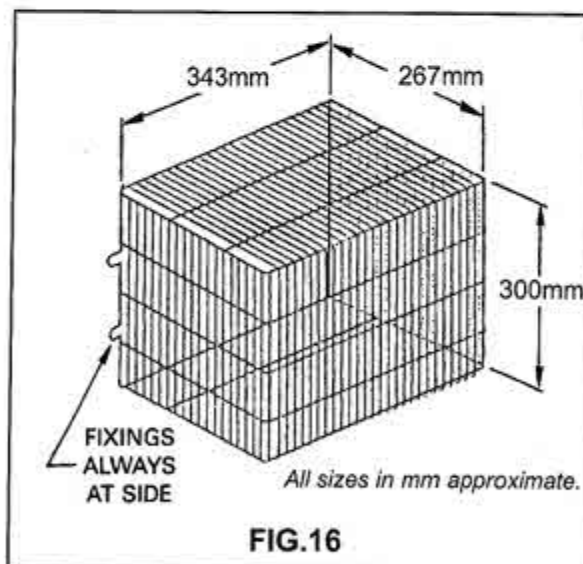


FIG.17 CIRCULAR BALANCED FLUE KITS 2350 & 2351

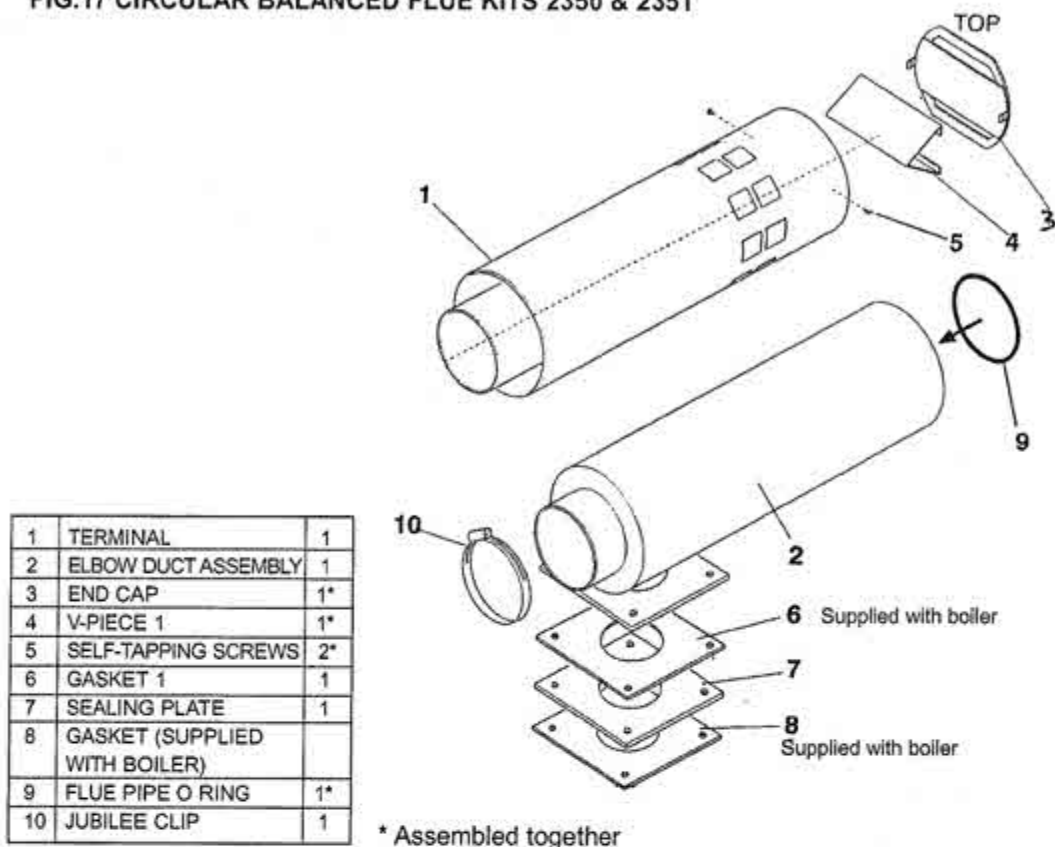
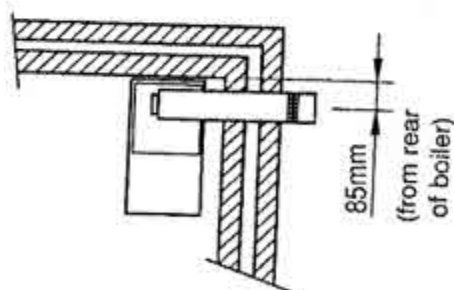
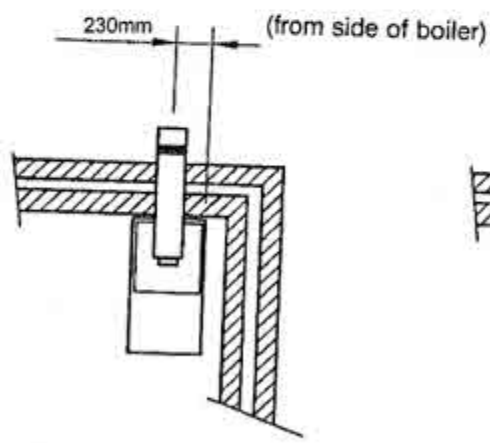


FIG.18 FLUE POSITION DIMENSIONS



IMPORTANT

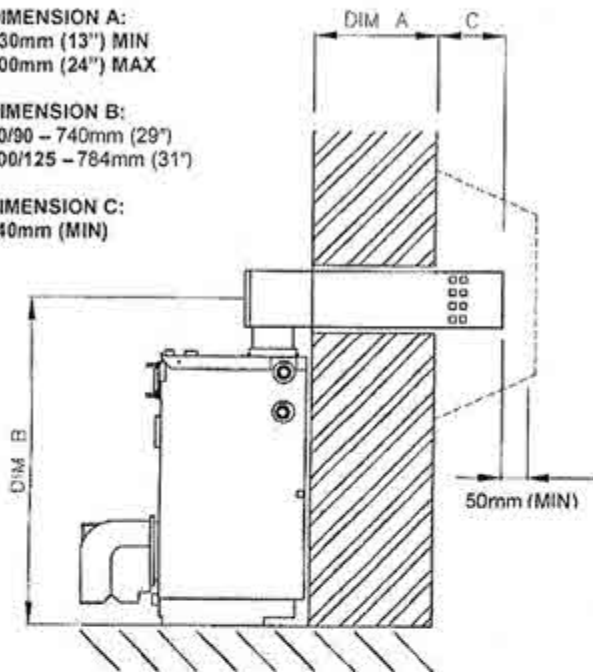
When installing the flue system it is important that the flue assembly inclines slightly from the boiler. This will allow any condensation formed in the flue to run back to the condense drain.

2350 – 600mm HORIZONTAL CIRCULAR BALANCED FLUE KIT

DIMENSION A:
330mm (13") MIN
600mm (24") MAX

DIMENSION B:
50/90 – 740mm (29")
100/125 – 784mm (31")

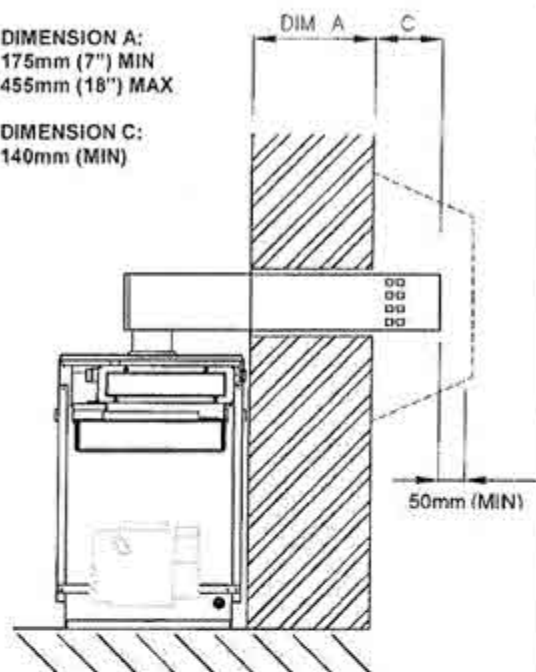
DIMENSION C:
140mm (MIN)



HOLE REQUIRED 130mm DIAMETER
THROUGH WALL TO TAKE TERMINAL

DIMENSION A:
175mm (7") MIN
455mm (18") MAX

DIMENSION C:
140mm (MIN)



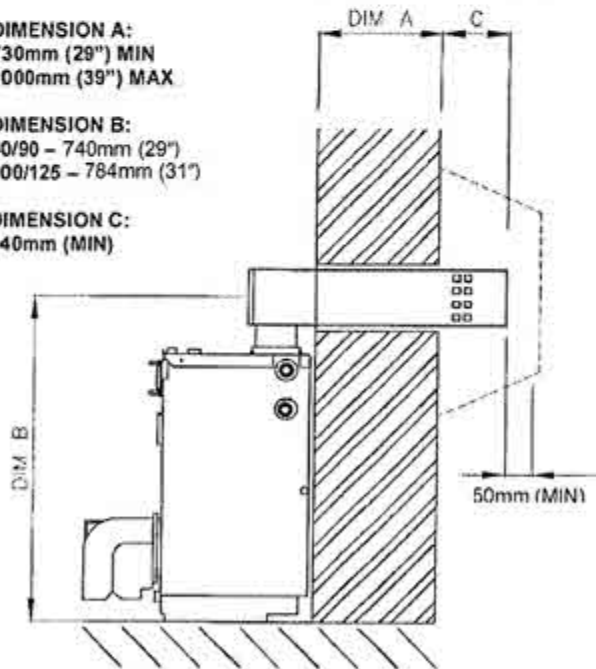
IMPORTANT:
WHEN INSTALLING THE FLUE SYSTEM, IT IS
IMPORTANT THAT THE FLUE INCLINES SLIGHTLY
UPWARDS FROM THE BOILER. THIS WILL ALLOW
ANY CONDENSATION WHICH FORMS IN THE FLUE TO
RUN BACK TO THE CONDENSATE DRAIN.

2351 – 1000mm HORIZONTAL CIRCULAR BALANCED FLUE KIT

DIMENSION A:
730mm (29") MIN
1000mm (39") MAX

DIMENSION B:
50/90 – 740mm (29")
100/125 – 784mm (31")

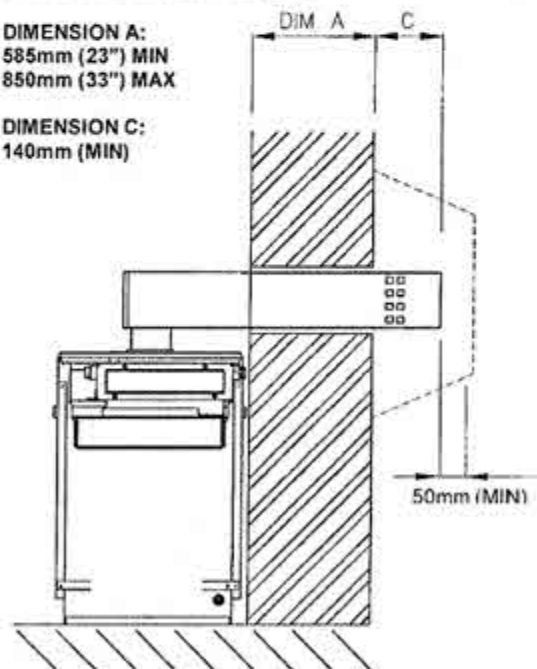
DIMENSION C:
140mm (MIN)



REAR OUTLET

DIMENSION A:
585mm (23") MIN
850mm (33") MAX

DIMENSION C:
140mm (MIN)



SIDE OUTLET

Fig. 19

7. COMMISSIONING

The boiler/burner **MUST** be commissioned by a qualified technician, preferably OFTEC trained and registered.

It is the responsibility of the installer to ensure the boiler is properly commissioned, failure to do so will make the boiler's guarantee and any extended warranty null and void.

Although all burners are factory tested before despatch, they will usually need further air adjustment to achieve the readings indicated in 'Burner detail leaflet' because of site variations in flue draught and back pressure.

Procedure

1. Switch off electrical supply to the boiler.
2. Ensure boiler is full of water and all valves are open.
3. Remove flue-cover and check that flue-baffles are correctly positioned (See Fig 20 for baffle arrangement).
4. Disconnect oil hose from burner, open shut-off valve and run off a quantity of oil into a container to check for a clean air free supply then reconnect hose. (This applies to single pipe gravity system only).
5. Check that the time-switch (if fitted) is in the ON position and room and boiler thermostats are calling for heat.
6. Switch on electrical supply and the burner should start.

Note: The burner may lock-out on first firing due to air in the pump, if this happens, wait about a minute before pressing reset button to restart burner. If a further lock-out occurs, the air should be bled from the pump pressure gauge connection.

7. Start and stop the burner two or three times until the flame cuts off sharply - this indicates any remaining air has been dispersed.
8. Allow the burner to run for about 15 minutes, then take a CO₂ reading through the sampling hole in flue-cover. Compare the reading with that given under 'Burner Settings' and adjust the air setting if necessary to achieve the required CO₂%. Also, check the smoke and flue gas temperature.
9. If the system is not going to be put into immediate operation, the fuel supply and electricity supply should be isolated.
If there is a possibility that the boiler will not be running during freezing conditions, the system should be drained down.

Handing Over

After completing the boiler installation, the installer should make a thorough check of the system to ensure it is completely satisfactory and demonstrate to the user the operation of the boiler and any system controls.

All instructions should be handed to the user for retention and advice regarding the need for annual servicing.

8. SERVICING

IMPORTANT: ISOLATE ELECTRICAL SUPPLY TO THE BOILER BEFORE SERVICING

To maintain the boiler's high thermal efficiency and reliable operation, it should be serviced annually by a qualified and registered OFTEC engineer. Electrical work should be carried out by a qualified engineer.

If the boiler is used to provide central heating and hot water all year round, the best time for its annual service is just before the start of the heating season.

Where the boiler is shut down for the summer months, the service should be carried out as soon as possible after the end of the heating season.

Oil tank

Open tank drain-cock to draw off any accumulated water and sludge.

Line filters

Turn off oil supply and remove filter bowl. Wash filter element clean with kerosene.

Important

Before commencing with service work on either the boiler or the fuel supply please read the health and safety information.

Before servicing the boiler carry out the following checks.

1. Ensure the air inlets on the flue terminal are not blocked or obstructed.
2. Check to ensure external controls are working correctly.
3. Check ventilation openings are not obstructed and are adequate for the size of the boiler.
4. Inspect all connections to boiler to ensure they are sound, remake any joints that are showing signs of leakage.
5. Inspect flexible oil supply lines and replace where necessary.

Condensate Trap

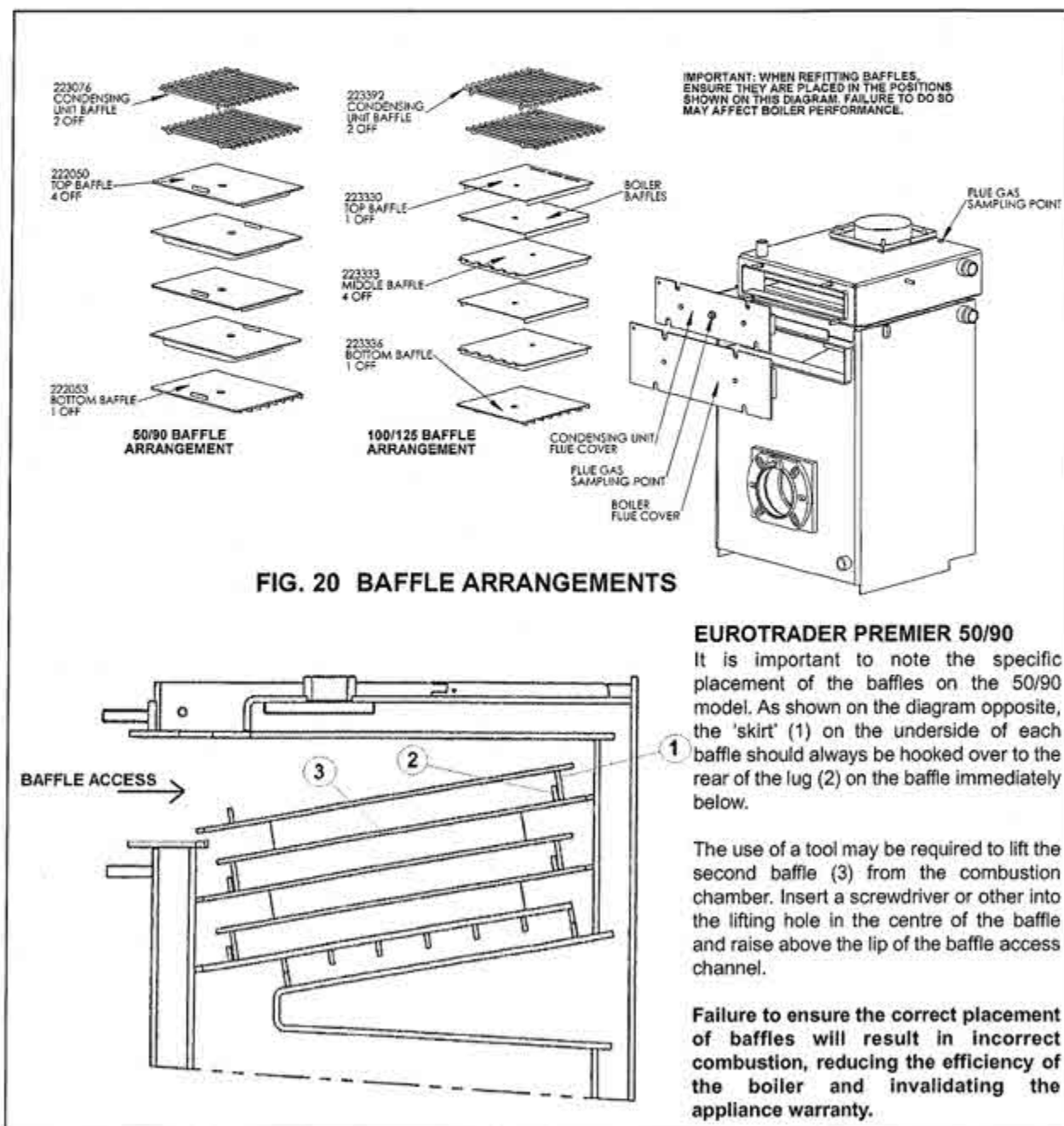
The condensate trap should be inspected as part of the annual service schedule.

Ensure there are no blockages within the condensate pipework and the trap itself, and clean all deposits from within.

The drain ports in the condensing unit should be also be cleaned. This is achieved by removing the 2 x screws on the top face at the rear of the unit and using a tool to remove the deposits from within. Replace screws once complete.

Servicing the Boiler

- 1 Remove the flexible air supply hose from the flue kit to the burner.
- 2 Remove burner ensure that if flexible oil supply hose has to be disconnected that there is no spillage of oil.
- 3 Remove both flue-cleaning covers from front of boiler lift out flue baffles from boiler then slide baffles out of condensing unit.
- 4 Brush all deposits from the flue baffles and clean the internal surfaces of the boiler.
- 5 Remove any flue deposits from the combustion chamber floor using a vacuum cleaner.
- 6 Clean the flue way surfaces of the condenser unit removing any deposits.
- 7 Check flue sealing gasket.
- 8 Inspect flue cleaning door seals and replace if necessary.
- 9 Replace the nozzle.
- 10 Check to ensure that the condensate drain is working and not blocked by pouring a small amount of water into condenser unit and checking to see that water discharges from condensate port.
- 11 Replace flue baffles in correct arrangement (see diagram) Refit both flue covers securing in position making gas tight seal using washers and wing nuts previously removed.
- 12 Check condensate trap to ensure the outlet is not obstructed.
- 13 Refit the burner securing the air hose in position using the clips provided.
- 14 Reconnect the flexible oil line to the burner (if removed).
- 15 Turn on oil supply, switch on electricity ensure system is calling for heat, boiler should now fire.
- 16 Finally check the combustion settings to those given under Burner Settings and make any adjustments where necessary.



9. FAULT FINDING

ELECTRICITY SAFETY - Before making any electrical checks, switch off mains supply to boiler.

FAULT	POSSIBLE CAUSE	ACTION
BURNER WILL NOT START	Control box locked out	Press reset button on front of burner. N.B. ONLY TRY TWICE
	Limit-stat tripped	Press reset button under control panel and check function of boiler control thermostat.
	Boiler thermostat or other system controls satisfied	Ensure all controls are calling for heat.
	Fuse blown	Fit new 5 amp fuse, if it blows again, check for short circuit in wiring.
	Check for live supply continuity up to burner	If live supply confirmed, change control box
	Motor or pump seized	Check for rotation and replace as necessary.
BURNER STARTS BUT FLAME NOT ESTABLISHED	No oil supply	Check oil level in tank and feed to burner.
	Photo-cell not seeing flame	Clean photo-cell and ensure it is fully plugged in.
	Air trapped in pump	Bleed off air through pressure gauge tapping.
	Solenoid valve faulty	Check coil for continuity and replace if faulty.
	Nozzle blocked	Replace nozzle with one of same specification.
	Electrodes incorrectly set	Reset gap and position electrodes as shown in Burner diagram.
	Electrode insulator cracked	Check and replace if insulator cracked or crazed.
	Ignition transformer and H.T. contacts	Check for spark and condition of H.T. contacts. Replace as necessary.
FLAME ESTABLISHED BUT BURNER LOCKS OUT AFTER FEW SECONDS	Low oil pressure	Check pump pressure and adjust to correct setting.
	Oil contaminated with water	Run off oil at burner until free of water and drain condensation from tank
	Oil filter partially blocked	Wash filter clean with kerosene.
	Photo-cell fault	Clean photo-cell and ensure it is fully plugged in. Replace if faulty.
	Oil pressure low	Check pump pressure and adjust to correct setting.

FAULT FINDING (Cont'd)

FAULT	POSSIBLE CAUSE	ACTION
MORNING START LOCK-OUT	Faulty non-return valve or air leak in two pipe system	Replace non-return valve and cure leak.
	Low voltage	Check with local Electricity Board.
	Combustion readings incorrect	Check combustion under normal running conditions and compare readings with those given under 'Burner Settings'.
	Oil level in tank falling below burner	Raise tank or fit a 2-pipe system.
DELAYED IGNITION- BURNER PULSATES ON START UP	Nozzle partially blocked	Replace nozzle
	Oil pressure too low	Check and recommission
	Flue blocked or damaged	Check and rectify
	Fan slipping on shaft	Check and retighten
	Pump coupling loose or worn	Check and replace
BURNER STARTS VIOLENTLY	Delayed ignition	Check electrode setting and adjust to correct gap
		Check electrodes for damage
		Check HT leads for damage and positive connection.
BURNER REPEATEDLY ATTEMPTS TO FIRE (Balanced Flue only)	Exhaust gas in combustion air	Remove air hose from boiler end of flue, leaving burner end in place. If burner starts normally, check flue for breakdown of seals and rectify as necessary.
		If indeterminate, leaving hose in place, pierce small hole in air hose and use flue gas analyser to check for carbon dioxide. If more than trace elements present, check flue for breakdown of seals and rectify as necessary.
COMBUSTION FUMES SMELL	Door not secure	Tighten wing nuts, securing door in position
	Seals on cleaning covers	Change door seals
	Burner incorrectly fitted	Check burner gaskets and replace if damaged, tighten burner fixing nuts
	Flue Gasket	Check flue is correctly sealed to boiler flue outlet.

EuroStar Boiler Spares

Item	Description	50/90	Qty	100/125	Qty
1	Boiler Body	223201	1	223301	1
2	R/H Side Panel	224001	1	224011	1
3	L/H Side Panel	224003	1	224013	1
4	Top Panel Front	224021	1	224031	1
5	Top Panel Rear	224023	1	224023	1
6	Casing Stiffener	209055	1	209055	1
7	Condensing Unit Clamp ¹	223133	1	223133	1
8	Boiler Control Thermostat	206896	1	206896	1
9	High-Limit Thermostat	206892	1	209892	1
10	Flue Socket Plate	223135	1	223135	1
11	Flue Sealing Gasket	223138	1	223138	1
12	Boiler Top Baffle ²	223050	4	223330	1
13	Boiler Bottom Baffle ²	223053	1	223336	1
14	Boiler Middle Baffle ²	N/A	-	223333	4
15	Condensing Unit Baffle	223076	2	223392	2
16	Boiler Flue Cover	223019	1	223378	1
17	Condensing Unit Flue Cover	223130	1	223398	1
18	Control Box	208256	1	208256	1
19	Burner ³	223120	1	223230	1
20	Flexible Oil Line ³	207019	1	207019	1
21	Acoustic Hose	209491	1	209491	1
22	Burner Mounting Flange	223118	1	223118	1
23	Burner Mounting Gasket	223108	1	223108	1
24	Condensing Unit	223020	1	223380	1

¹ Not Shown

² Not Shown; see Fig 20 (page 23) for baffle configurations.

³ Not Shown; see burner details for further information.

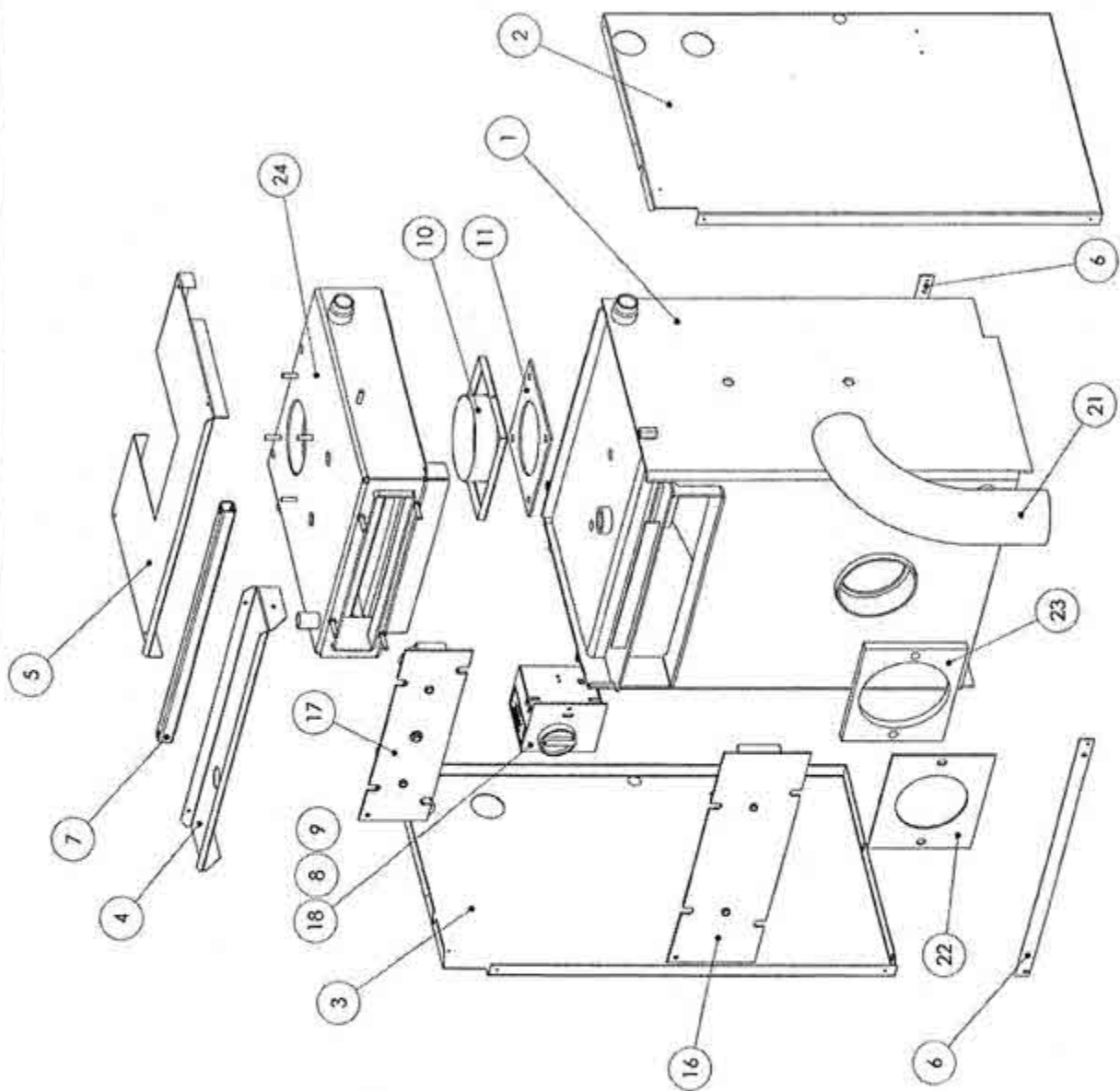


FIG. 21 BOILER ASSEMBLY



TR ENGINEERING LTD
Unit 7, Newton Chambers Way,
Thorncliffe Industrial Estate, Chapeltown
Sheffield S35 2PH
Tel: (0114) 257 2300
Fax: (0114) 257 1419
www.trianco.co.uk

© TR Engineering Ltd. Copyright in this brochure and the drawings or illustrations contained within are vested in TR Engineering Ltd and neither the brochure or any part thereof may be reproduced without prior written consent.