



# Trianco

## TRO Range

CI/SfB

56 41



By appointment to H.M. Queen Elizabeth  
The Queen Mother  
Manufacturers of Domestic Boilers

## Users Instructions

TRO 12/14

\*TRO 15/19

\*TRO 20/25

\*TRO 28/32

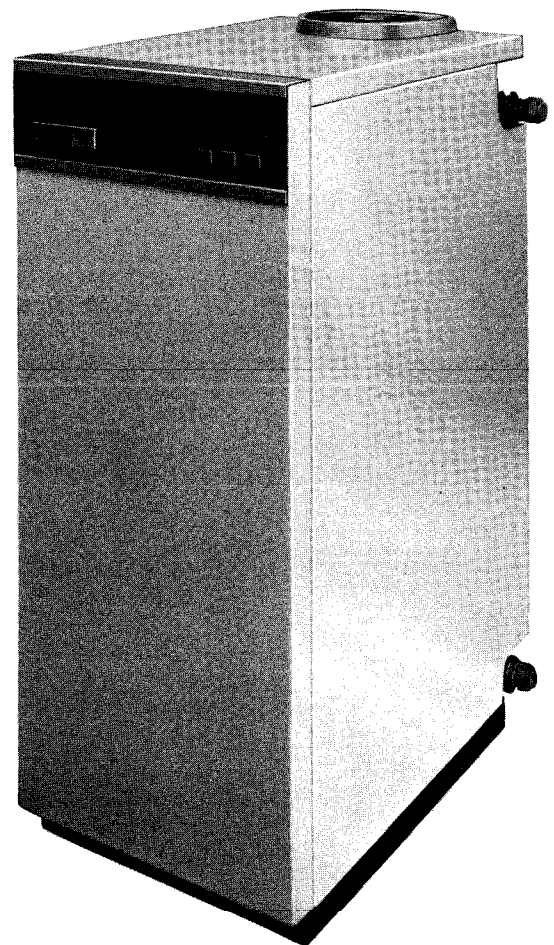
TRO 37/45

TRO 50/73

\*Mk. II Models.

TO BE RETAINED BY  
HOUSEHOLDER

*25156 'D' p. 192-193*  
*TEBDINGTON 'D'*



### HOW TO USE YOUR TRIANCO REDFYRE BOILER

Your Boiler has been designed to give you years of trouble free service and these instructions are provided to assist you in obtaining the best performance with the least trouble and cost. The boiler is fully automatic in operation, and requires little attention other than the

setting of the thermostat and any other controls in the system.

To maintain the boiler's high efficiency it should be serviced and thoroughly cleaned at regular intervals, at least once a year preferably on a contract basis. Further information is given under Commissioning and Servicing Instructions.

## TO LIGHT THE BOILER

Before firing the boiler, ensure that the system is full of water, that there is sufficient oil in the storage tank, and all valves are open.

1. Check that the time control (if fitted) is ON.
2. Set the boiler thermostat to the desired temperature.
3. Switch on the boiler electricity supply and the burner will fire.
4. Set the time control (if fitted) to the correct time and programme required.
5. The boiler will now operate automatically, cutting "IN" and "OUT" according to the heat demand.

## BOILER THERMOSTAT SETTINGS

The boiler thermostat has an "OFF" position and a calibration range of "1 to 6" which corresponds to a temperature range of 57°C (135°F) to 88°C (190°F) approximately. The thermostat is set by turning the knob until the indicator is in line with the graduation on the fascia-plate.

It is recommended that the boiler is not operated below the "Low" setting. The thermostat setting chosen will probably be a compromise between having domestic hot water at the temperature preferred, say 60°C (140°F) and having the central heating system providing enough heat to combat the outside temperature conditions. (Central heating systems are normally designed to operate at 82°C (180°F) during mid-winter). This usually means that the stored hot water supply will be much hotter than is desired, so it is a good plan to have a temperature control valve fitted in the domestic

hot water circuit. If a room thermostat is fitted, the boiler thermostat will probably be set to provide the maximum heat likely to be required in cold weather and the system will be controlled by the demands of the room thermostat. Where no room thermostat is fitted, the boiler thermostat may be adjusted to suit the heating demand imposed by the outside temperature. When the boiler is being used to heat domestic hot water only, the "Low" setting will usually be adequate.

## SIMPLE FAULT FINDING

If the boiler fails to light for no apparent reason, make the following checks before calling a service engineer:

1. Check for failure in the electrical supply e.g. power cut.
2. Check for blown fuse on boiler. If the 5 amp fuse has blown and on replacement blows again, switch off the mains electricity supply and call a service engineer.
3. Check that there is sufficient oil in the tank and that the valve is open.
4. Check for control box lock-out. Press the re-set button and the burner should fire.

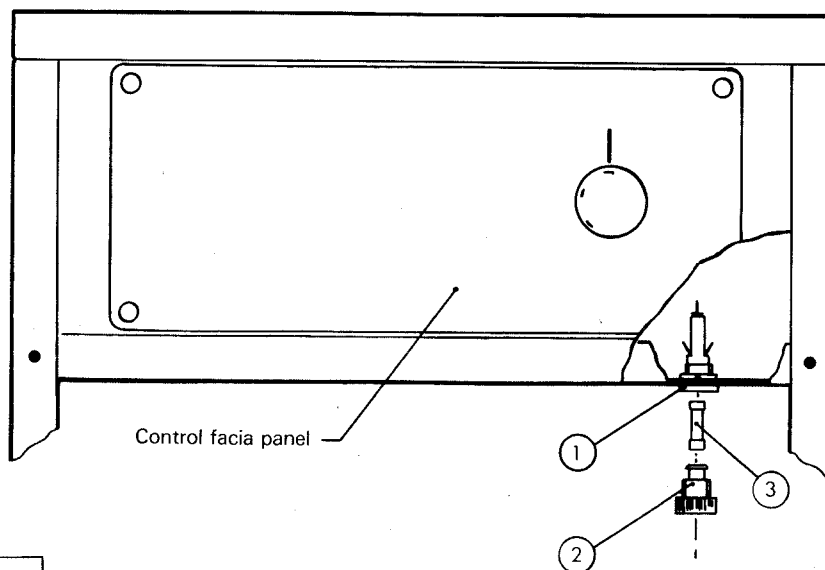
If after carrying out the above tests, the burner still fails to fire, call your service engineer.

NOTE: If the boiler has been off as a result of a power failure it will be necessary to re-set any time controls to the correct time when the electrical power is restored.

## FUEL

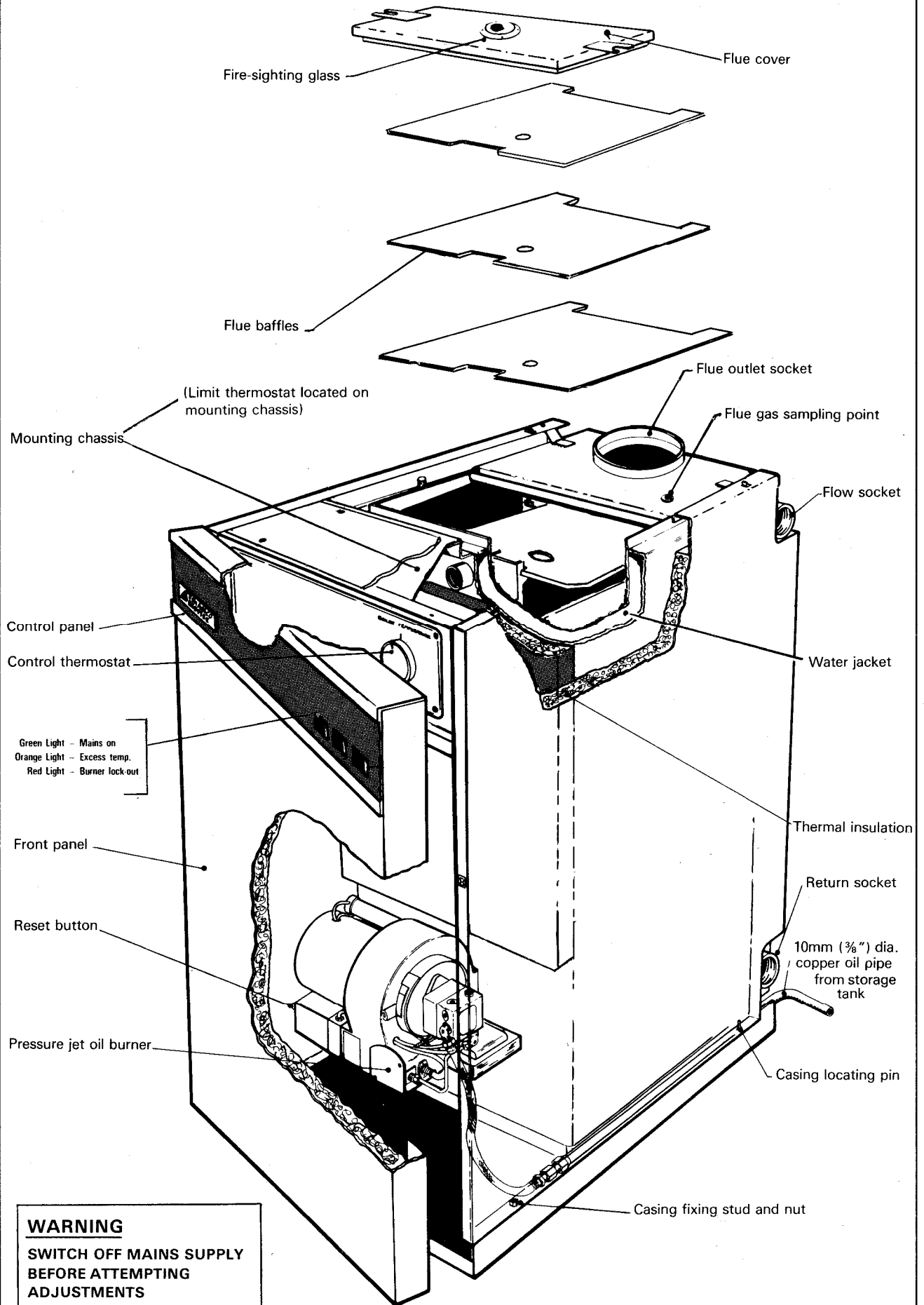
The recommended fuel is 28 seconds kerosene (B.S. 2869: 1970 Class C2).

CUT-AWAY SECTION SHOWING FUSE HOLDER



1	Fuse Holder
2	Cap
3	5 Amp Fuse

# TRO 12/14

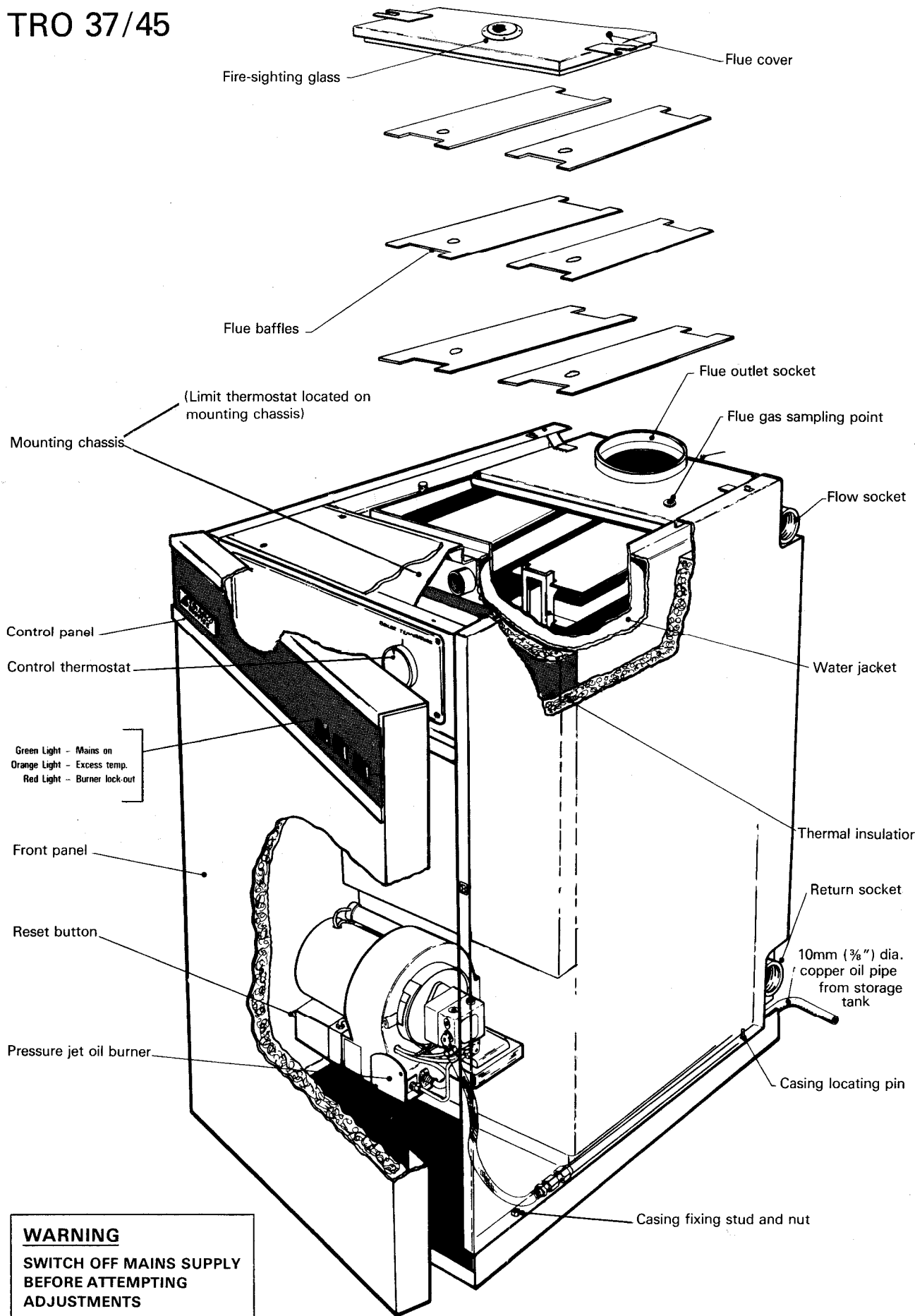


**WARNING**

SWITCH OFF MAINS SUPPLY  
BEFORE ATTEMPTING  
ADJUSTMENTS

TRO 15/19, 20/25 Mk. II

TRO 37/45

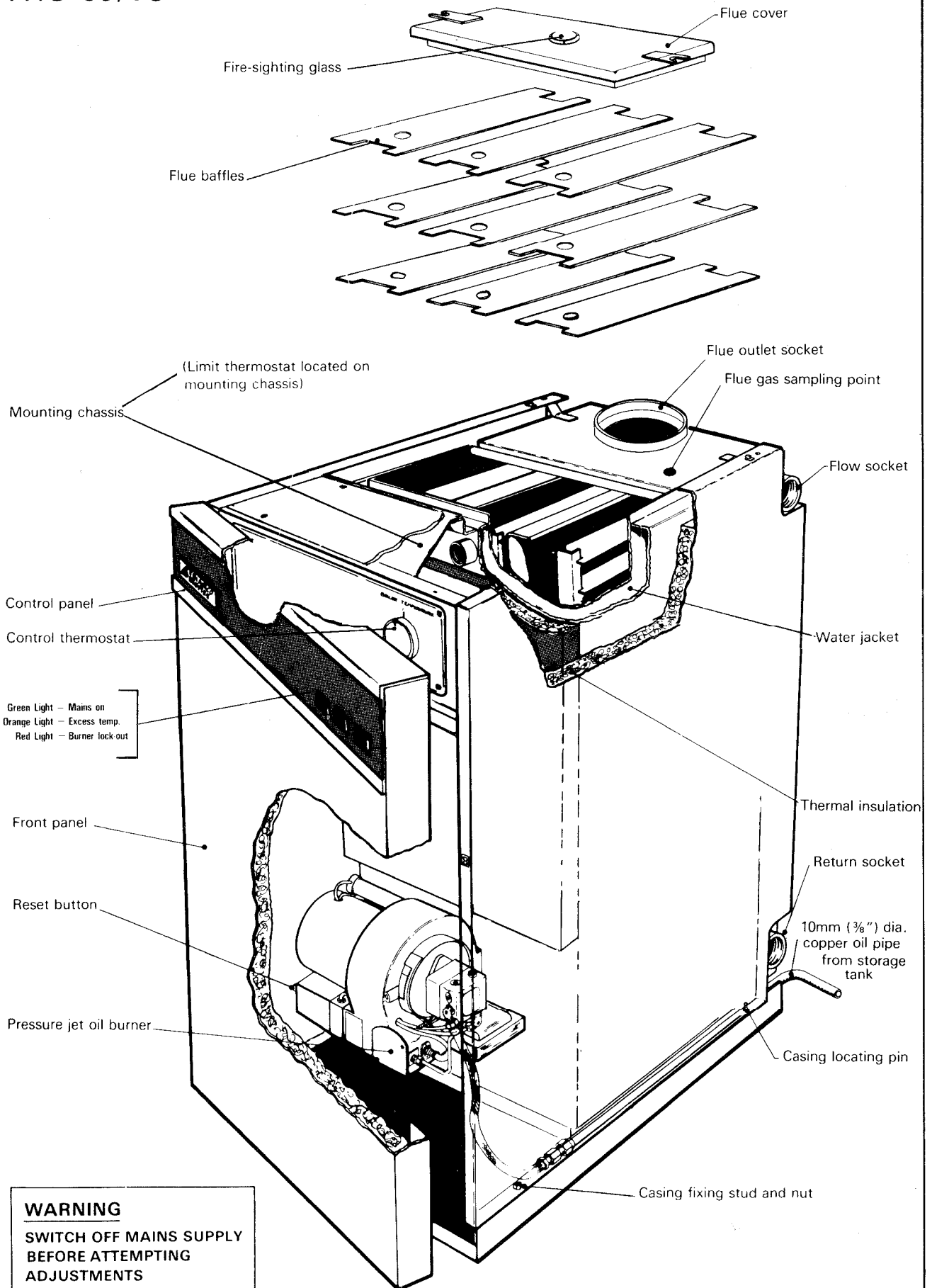


**WARNING**

SWITCH OFF MAINS SUPPLY  
BEFORE ATTEMPTING  
ADJUSTMENTS

TRO 28/32 Mk. II

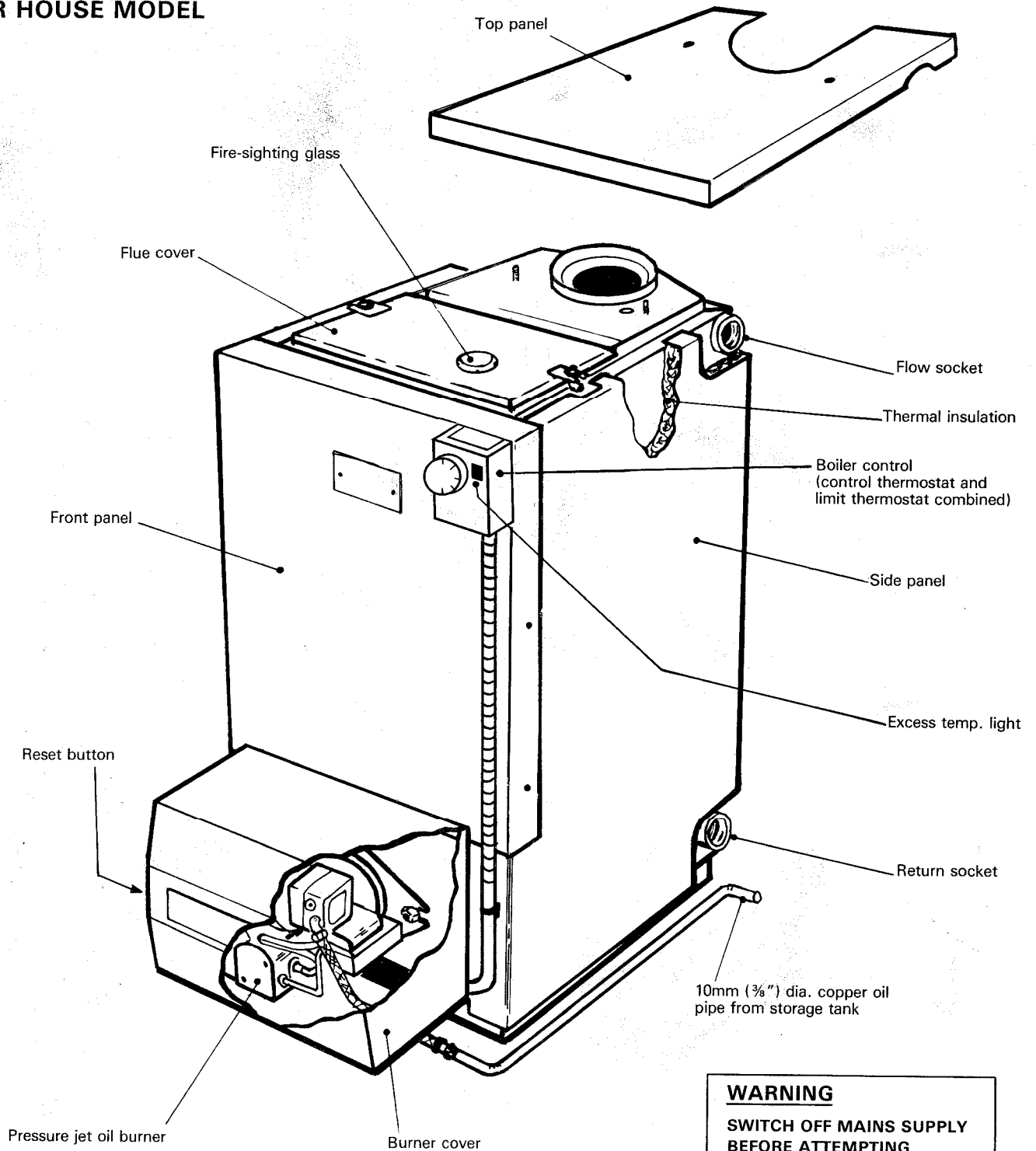
TRO 50/73



**WARNING**

SWITCH OFF MAINS SUPPLY  
BEFORE ATTEMPTING  
ADJUSTMENTS

# BOILER HOUSE MODEL



**WARNING**  
SWITCH OFF MAINS SUPPLY  
BEFORE ATTEMPTING  
ADJUSTMENTS

IMPORTANT WHEN THE T.R.O. 15/19, 20/25, & 28/32 BOILERS ARE FITTED WITH THE T.R. FLUE TERMINAL SILENCER ONLY KEROSENE CLASS C2 FUEL SHOULD BE USED.

© Trianco Redfyre Limited 1995. Copyright in this brochure and the drawings or illustrations contained in it is vested in Trianco Redfyre Limited and neither the brochure nor any part thereof may be reproduced without prior written consent.

*Trianco Redfyre policy is one of continuous research and development. This may necessitate alterations to this specification.*



**TRIANCO REDFYRE LIMITED**  
Thornccliffe, Chapelton, Sheffield S30 4PZ  
Tel: Sheffield (0114) 257 2300  
Fax: (0114) 245 3021



By appointment to H.M. Queen Elizabeth  
The Queen Mother  
Manufacturers of Domestic Boilers